

Panasonic

LUMIX G9II

Confidential / Internal Use Only / Embargo: 14:00 UTC, Sept. 12, 2023

G Series 15th Anniversary

2008
G1



1st since 2008
MIRRORLESS
1st Digital Single Lens Mirrorless

A legitimate evolution, born on the series' 15th anniversary



2023
NEW



LUMIX G

LUMIX G9II

Find that decisive moment and capture it forever

The opportunity for the perfect photo may only come once in a year, or a decade, or even a lifetime. We poured our heart and soul into creating a camera that would never fail to preserve those moments.

With the LUMIX G9II, we have further evolved LUMIX' autofocus and burst shooting capabilities. At the same time, we didn't compromise on picture quality, ensuring you'll still enjoy the pictures you took decades from now.

The LUMIX G9II combines the mobility of the Micro Four Thirds system with the latest LUMIX technology. With the LUMIX G9II at your side, new discoveries await.



TABLE OF CONTENTS

1. Product Overview
2. Picture-Making
 - New Photo Style
 - High Image Quality
3. High Speed Response
 - Dependable Autofocus
 - Recognition Technology
 - Burst Shooting
4. Image Stabilization
5. Video Creation
6. Outstanding Mobility
 - Intuitive Operation
 - Durability & Reliability
7. Spec Comparison

Product Overview

Capture the Decisive Moment

LUMIX G9 II



Body KIT

M KIT : Body + H-FS12060

LUMIX G VARIO 12-60mm / F3.5-5.6 ASPH. / POWER O.I.S.

L KIT : Body + H-ES12060

LEICA DG VARIO-ELMARIT 12-60mm / F2.8-4.0 ASPH. / POWER O.I.S.

1 : Picture-making for a camera that takes pictures

25.2MP Image Sensor

New Engine

Dynamic Range Boost *1

100MP Handheld High-Res

REAL TIME LUT

LEICA Monochrome

2 : Fast, accurate, and dependable autofocus system

Phase Hybrid AF

Animal Eye/Body Detection

Car/Motorcycle Detection

AFC 60 fps / AFS 75 fps *2 & Larger Buffer Memory (3 sec or more)

Pre-Burst Shooting

3 : Outstanding mobility, response, and intuitive operation

8.0-stop 5-Axis B.I.S. *3

7.5-stop 5-Axis Dual I.S. 2 *4

Active I.S. Technology

Joystick with 8 Directions

3680k-dot OLED LVF

1840k-dot Free-angle Monitor

Dust/Splash/Freeze Resistant *5

USB-PD Power Supply/Charge

Battery Grip DMW-BG1 *Optional

4 : A launching point for video creation

4:2:0 10-bit C4K/4K 120p/100p

4:2:2 10-bit C4K/4K 60p/50p

4:2:0 10-bit 5.7K (17:9) 60p/50p

USB-SSD Recording

13+ stops V-Log / V-Gamut *6

Dynamic Range Boost *1

*1 This function is applied automatically. Dynamic Range Boost is not activated when shooting video/slow & quick shooting at a setting of over 61 fps, or with SH burst shooting. Dynamic Range Boost is not activated at shutter speeds slower than 1/15 during still image shooting, depending on the ISO. *2 Electronic shutter. *3 Based on the CIPA standard [Yaw/Pitch direction: focusing distance f=60mm (35mm camera equivalent f=120mm) when H-ES12060 is used. *4 Based on the CIPA standard [Yaw/Pitch direction: focusing distance f=140mm (35mm camera equivalent f=280mm) when H-FSA14140 is used.] *5 Dust and Splash Resistant does not guarantee that damage will not occur if this camera is subjected to direct contact with dust and water *6 When shooting video/slow & quick shooting at a setting of over 61 fps, the dynamic range provides 12+ stops.

Faster. More beautiful. A new level of shooting experience.

Evolution of Image Processing Devices

EVOLUTION OF SENSOR



THE LATEST ENGINE

Approx. 2x higher-speed signal processing



Main Feature Summary

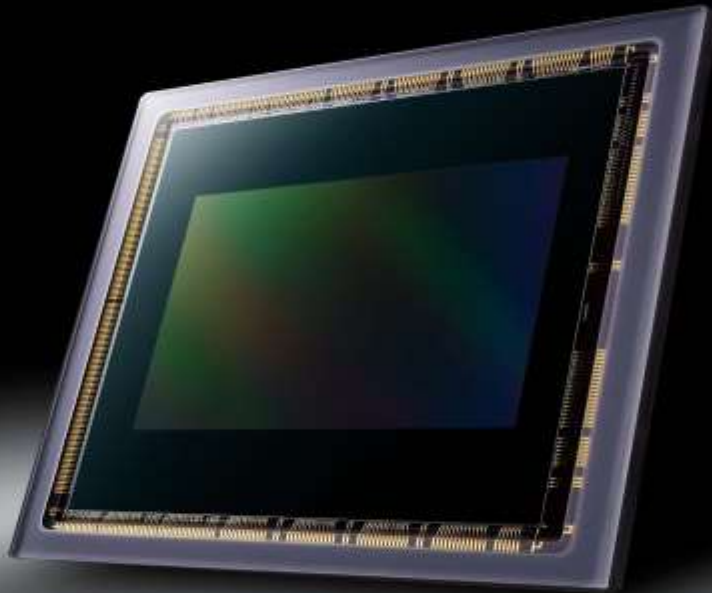
An evolution in basic performance befitting the new flagship of the LUMIX G

- FEATURE 1**
Superb Image Quality
- FEATURE 2**
Fast and Accurate Auto Focus for Different Subjects
- FEATURE 3**
Reliable Burst Shooting Experience

Capture the Decisive Moment Forever

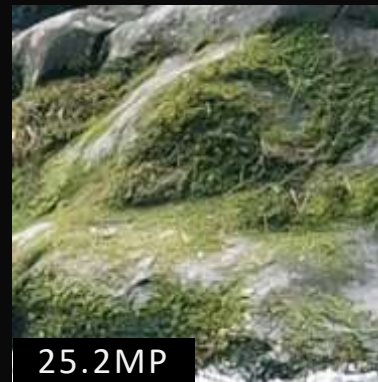
The philosophy “Capturing it all” serves as the bedrock for LUMIX's picture-making

New 25.2MP Live MOS Sensor



- ✓ *New sensor with phase detection AF*
- ✓ *Dynamic Range Boost for still images
Dramatic evolution in expression of shadow
gradation with RAW shooting*

4x the pixels to meticulously depict the finest details
100MP Handheld High-Res Mode



- ✓ *Handheld high-resolution mode*
- ✓ *100MP RAW & JPEG*
- ✓ *Easy access from drive mode dial*

Capture the Moment

Capture that decisive moment you're looking for

New Phase Hybrid AF



PHASE HYBRID AF



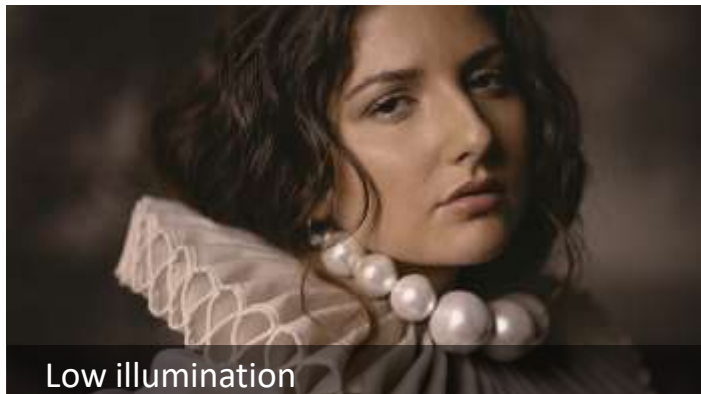
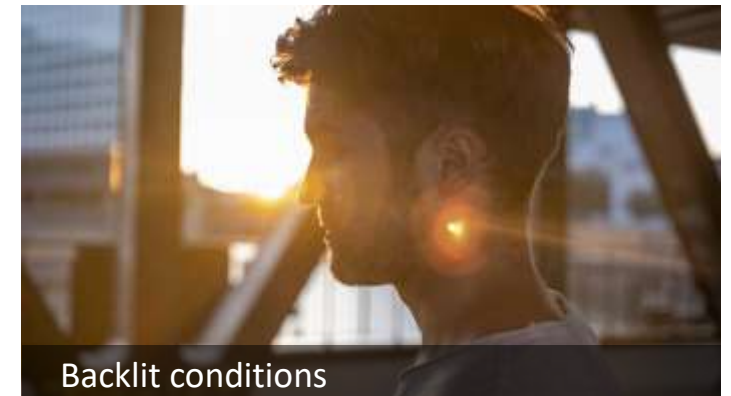
The first LUMIX G series camera that has adopted the Phase Detection AF system

- ✓ *Significantly improved subject tracking*
- ✓ *AF points increased to 779*

Capture the Moment

Phase detection AF expands your photographic range

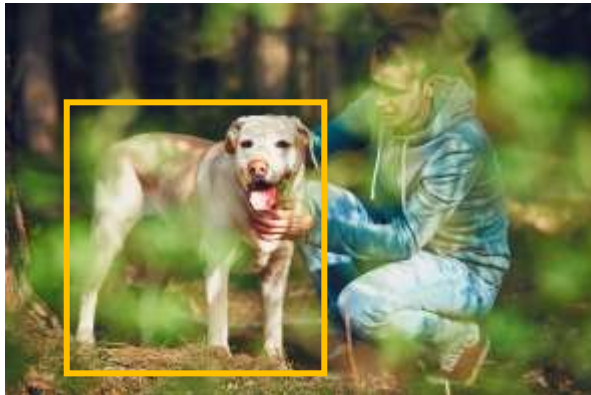
Dramatic Evolution of AF in 6 Scenes



Expand the range of animal and sports photography

Dramatic Evolution of Detection AF

New Animals



New Cars/Motorcycles

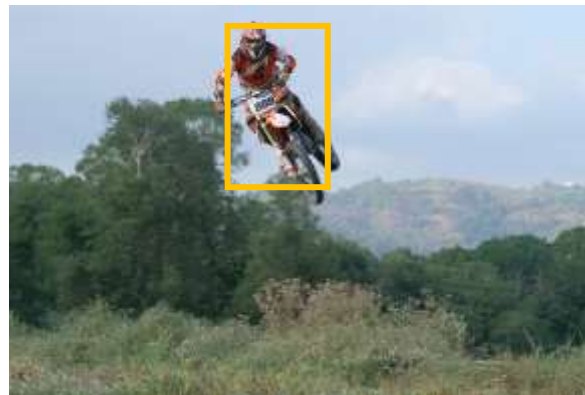
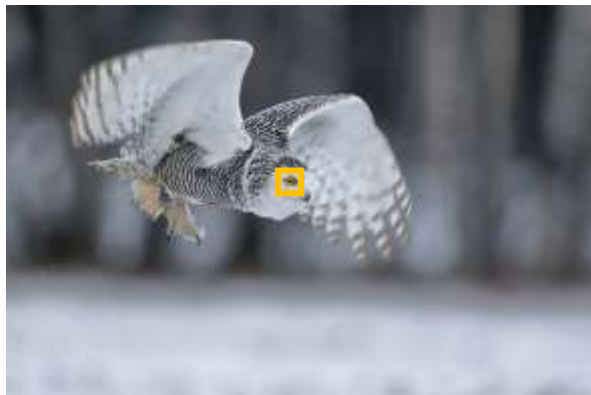


Advanced Human



Recognizes humans and animals separately

Recognizes animal eyes



More accurate human body recognition
=> Improvement in scenes with several people

*Not all subjects can be detected according to the settings.
*Some subjects that are not animals may be detected as animals.

Capture the Moment

Keeps up while you continue to shoot

Improved AFC 60 fps / AFS 75 fps

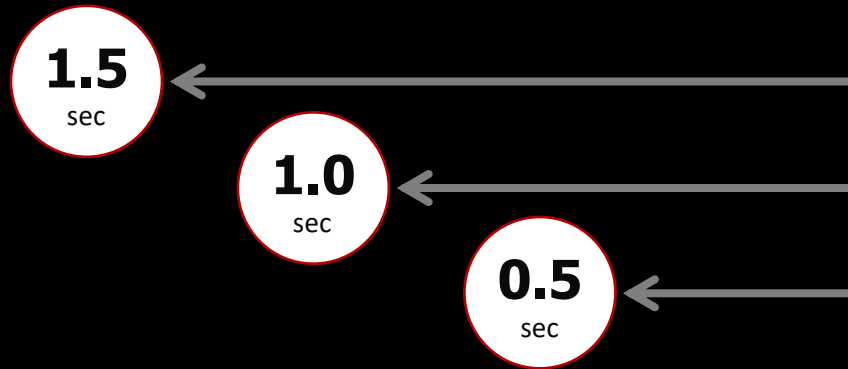


- ✓ AFC 60 fps / AFS 75 fps with electronic shutter
- ✓ Large buffer (over 3 sec.)
- ✓ Blackout-free burst shooting

Capture the Moment

Go back in time to capture that decisive moment

Improved Pre-Burst Shooting



- ✓ Go back in time to get your shot
- ✓ 0.5-, 1-, or 1.5-second settings

* 0.4 sec for LUMIX G9



Enhanced assist functions that support your passion for photography

FEATURE 1

Improved Image Stabilization for Better Handheld Experience

FEATURE 2

Intuitive Operability That Allows You to Focus on the Subject

A New Level of Shooting Experience

Outstanding Mobility

Beautiful sharp images in slow shutter situations or with handheld telephoto lens

Improved 8.0-stop Compensation Power

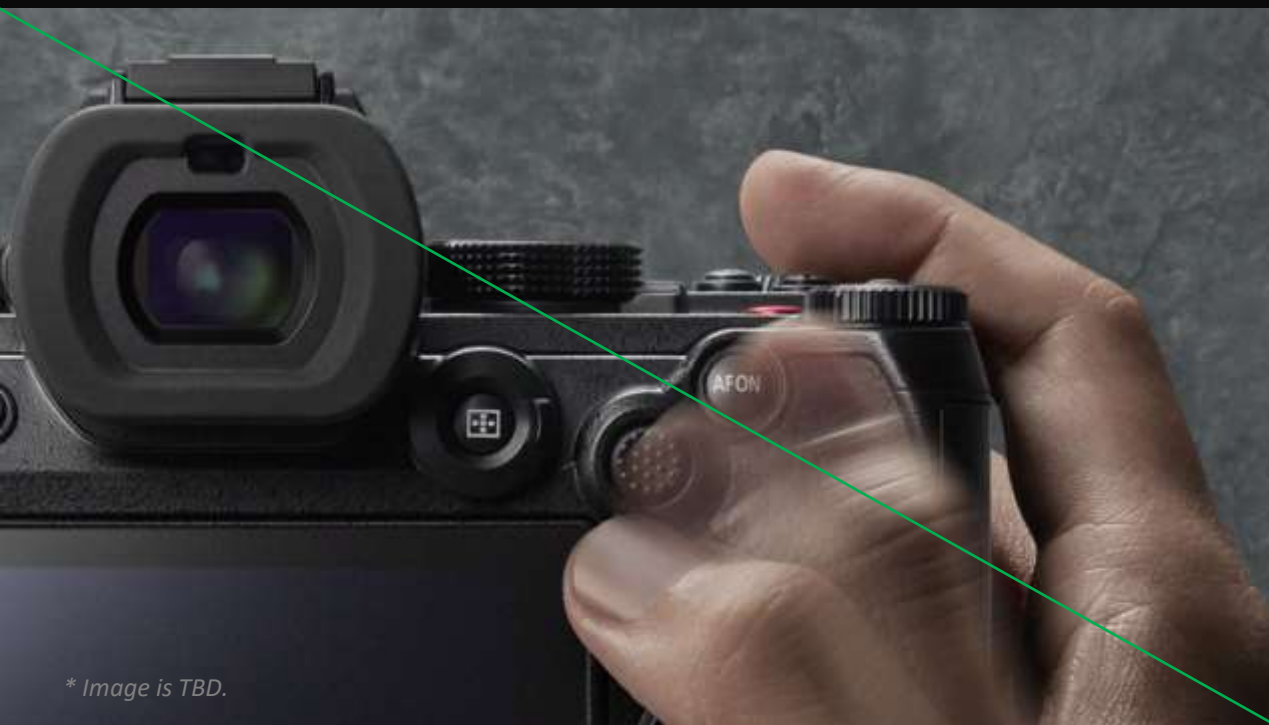


- ✓ 8.0 stop B.I.S. ^{*1} provides powerful compensation even at slower shutter speeds
- ✓ 7.5-stop 5-Axis Dual I.S. 2 ^{*2} provides powerful compensation even in telephoto range where Body I.S. drops

*1 Based on the CIPA standard [Yaw/Pitch direction: focusing distance f=60mm (35mm camera equivalent f=120mm) when H-ES12060 is used. *2 Based on the CIPA standard [Yaw/Pitch direction: focusing distance f=140mm (35mm camera equivalent f=280mm) when H-FSA14140 is used.]

Operate your camera like it's a part of you

Joystick with 8 Directions



** Image is TBD.*

- ✓ *Joystick with 8 directions for both LUMIX G9II and optional DMW-BG1*
- ✓ *WB / ISO / Exposure compensation button on the top*

Outstanding Mobility

Stress-free viewfinder and monitor let you focus on your subject

OLED LVF & Free-angle LCD



- ✓ *3680k-dot OLED live view finder*
- ✓ *1840k-dot free-angle monitor with outstanding brightness and a wide color gamut*

Panasonic

Outstanding Mobility

Great grip throughout the entire day

New Battery Grip DMW-BG1



- ✓ *Easy handling even in vertical shooting*
- ✓ *Extended battery life when using 2 batteries*
- ✓ *Buttons and Joystick with 8 directions can be used in the same way as the G9II*
- ✓ *Dust, splash and freeze resistant*

** Image is TBD.*

Main Feature Summary

Dare to express yourself in new ways with an array of creative features

FEATURE 1
Diverse Photo Styles

FEATURE 2
Discover the Fun of Video Creation

Expand Your Range of Creativity

Enjoy Leica's legendary photo style

New LEICA Monochrome



Leica is well known for its superior picture quality and has a reputation from users all over the world for its outstanding depiction and expressiveness.

Through our L² Technology collaboration, we learned the picture-making philosophy that Leica has built up over its long history and realized this mode as one of the new expressiveness of the LUMIX camera.

It features deep contrasts between black and white.

Enables creators to fully explore their own unique expressions of color

New REAL TIME LUT

Record LUT-applied photos and videos on the camera itself.

Even if you are not familiar with editing with dedicated software, you can extend the photo style to an infinite number of possibilities.

A Launching Point for Video Creation

Express your decisive moment with slow motion video

C4K/4K 120p/100p



* Image is TBD.

✓ 4:2:0 10-bit C4K/4K 120p/100p

✓ 4:2:2 10-bit C4K/4K 60p/50p

A Launching Point for Video Creation

Start creating videos more freely and easily

Active I.S. Technology



ACTIVE I.S. TECHNOLOGY

B.I.S. & Dual I.S. 2

Boost I.S.

Active I.S. **NEW**

E.I.S. **IMPROVED**

Corrects for shake
when shooting on the move

Corrects even **LARGER SHAKE**
such as running situations

Corrects **PERSPECTIVE DISTORTION**
that occurs during video shooting

: Phenomenon in which straight lines appear distorted,
caused by perspective.

Compact, Lightweight System

Full lineup of exclusive LEICA DG lenses for LUMIX, from 16mm to 1600mm.

In addition, two redesigned telephoto zoom lenses in line with the release of the LUMIX G9II.

→ The Coveted Mobility of the Micro Four Thirds System, Enhanced

35mm equivalent	18mm	24mm	28mm	35mm	50mm	85mm	100mm	135mm	200mm	300mm	400mm	500mm	600mm	800mm	1600mm
Fixed Focal Length	9 mm	12 mm	15 mm	25 mm	42.5 mm	45 MACRO					200 mm	+ TELECONVERTER			
F1.7 Zoom	10-25 mm		25-50 mm												
F2.8 Zoom	12-35 mm		35-100 mm			REDESIGNED									
F2.8-4.0 Zoom	8-18 mm			12-60 mm			50-200 mm			+ TELECONVERTER					
F4.0-6.3 Zoom	REDESIGNED							100-400 mm				+ TELECONVERTER			

Redesigned : H-RSA100400

LEICA DG VARIO-ELMAR 100-400mm / F4.0-6.3 II ASPH. / POWER O.I.S.

Highly Mobile 200-800mm Ultra-Zoom

35mm camera equivalent



1

Excellent Mobility for Active Field Shooting

- Approx. 985 g - Compact, lightweight body for easy carrying around
- Splash/dust-resistant design*¹ + *New* Freeze-resistant design

2

New Teleconverter Compatibility

- Up to 1,120mm*² *³ with 1.4x teleconverter DMW-TC14 (optional)
- Up to 1,600mm*² *⁴ with 2.0x teleconverter DMW-TC20 (optional)

3

New Full Life-size Macro Photography

- Maximum magnification of 0.5x*²
- Maximum magnification of 1.0x*² when teleconverter DMW-TC20 is attached

4

High Picture Quality Over the Entire Zoom Range

- High image quality over the entire zoom range to clear stringent LEICA standards
- *New* Zoom limit switch, Improved operating feel of the zoom ring
- Improved focus tracking performance when zooming

Redesigned : H-ES35100

LEICA DG VARIO-ELMARIT 35-100mm / F2.8 / POWER O.I.S.

Full-range F2.8 70-200mm LEICA DG Lens

35mm camera equivalent



1

Excellent Mobility for Active Field Shooting

- Compact, lightweight body for easy carrying around
- Full-range F2.8 and 5-axis Dual I.S. 2 compatibility
- Splash/dust/freeze-resistant design*

2

New LEICA DG VARIO-ELMARIT Lens

- High optical performance while keeping the body compact
- Nano Surface Coating
- Further suppressing ghosts and flaring
- High image quality over the entire zoom range to clear stringent LEICA standards

3

High Videography Performance

- Smooth exposure changes by micro-step aperture control
- Focus ring control (Nonlinear / Linear)



LEICA DG VARIO-ELMARIT 12-35mm F2.8 ASPH. POWER O.I.S.

Full-range F2.8 24-70mm LEICA DG Lens

35mm camera equivalent



* Already on the market



1

Mobility that Supports a Wide Variety of Situations

- Compact, lightweight body for easy carrying around
- Full-range F2.8 and 5-axis Dual I.S. 2 compatibility
- Excellent close-up performance
- Splash/dust/freeze-resistant design*

2

LEICA DG VARIO-ELMARIT Lens

- High optical performance while keeping the body compact
- Nano Surface Coating
- Further suppressing ghosts and flaring
- High image quality over the entire zoom range to clear stringent LEICA standards

Compact, Lightweight System



MFT	Length (Approx.)		Weight (Approx.)	
LUMIX G9II	90 mm	317	658 g*	1800
H-RSA100400	249 mm		985 g	
DMW-TC20	34 mm		160 g	
		mm	g	

Full-frame	Length (Approx.)	Weight (Approx.)
Camera	450	4000
800mm lens		
2x Telecon		
	mm	g

*Body, Battery, Card x 1



New Photo Style

New Photo Style

- WHO** Photographers who want to fully depict the scene they see right in front of them, right now, not process it later
- WHAT** Delivers film capabilities that meet diverse creative needs, from faithful recreations to unique portrayals

New LEICA Monochrome

Leica is well known for its superior picture quality and has a reputation from users all over the world for its outstanding depiction and expressiveness.

Through our L² Technology collaboration, we learned the picture-making philosophy that Leica has built up over its long history and realized this mode as one of the new expressiveness of the LUMIX camera.

It features deep contrasts between black and white.



Updated Photo Styles from the G9

	G9II	G9
Standard	Yes	Yes
Vivid	Yes	Yes
Natural	Yes	Yes
L. Classic Neo	Yes	-
Flat	Yes	-
Landscape	Yes	Yes
Portrait	Yes	Yes
Monochrome	Yes	Yes
L.Monochrome	Yes	Yes
L.Monochrome D	Yes	Yes
L.Monochrome S	Yes	-
LEICA Monochrome	Yes	-
Cinelike D2	Yes	Cinelike D
Cinelike V2	Yes	Cinelike V
Like709 (& Knee Control)	Yes	-
V-Log	Yes	(V-Log L with SFU1)
Hybrid Log Gamma	Yes	-
My Photo Style 1-10	Yes	(Custom)

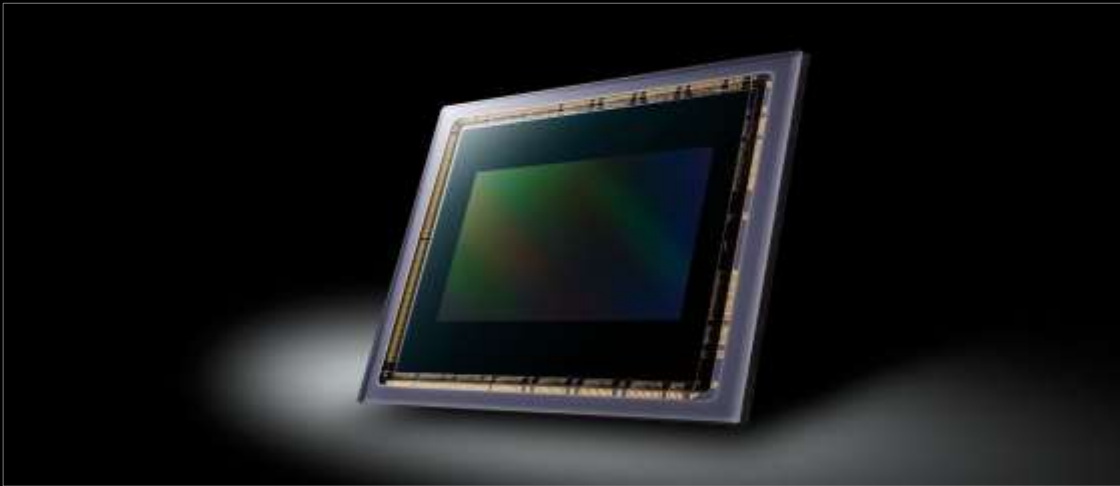


High Image Quality

New Imaging Devices

Uncompromising Image Quality for Both Photos and Videos

New 25.2MP Sensor with PDAF



Higher Image Quality

- Faithful and rich color expression
- Wider dynamic range : Dynamic range boost, 13+ Stop V-Log/V-Gamut*
- Natural, high-resolution rendering
- ISO100-25600 / Extended ISO 50

New Engine with L² Technology



2x Processing Speed

- High resolution, high bit rates video : 5.8K 4:3 / 5.7K 17:9 60p/50p 4:2:0 10-bit
- Unlimited video recording : C4K/4K 60p/50p 4:2:2 10-bit
- Less rolling shutter distortion : AFC RAW 60fps burst shooting

*When shooting video/slow & quick shooting at a setting of over 61 fps, the dynamic range provides 12+ stops.

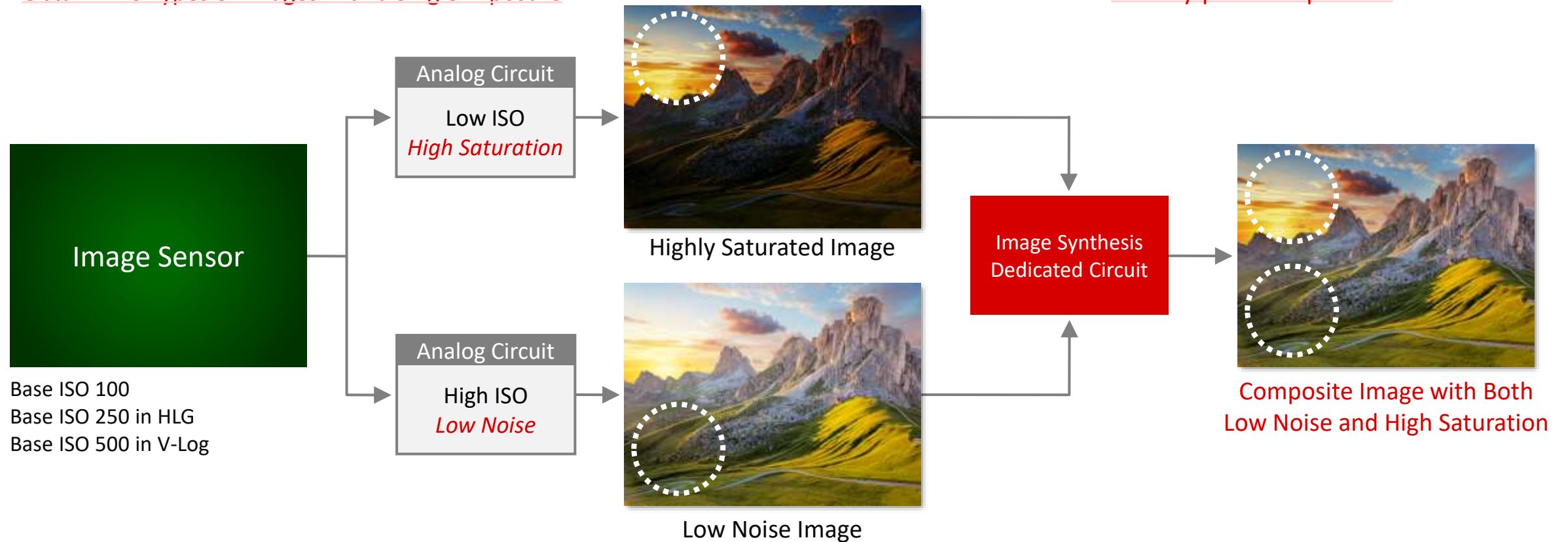
Dynamic Range Boost

WHO Photographers who want image quality that rivals a full-frame camera

WHAT Real-time HDR composition with single exposure

Obtain Two Types of Images with a Single Exposure

Pixel-by-pixel Composition



100MP High Resolution Mode

WHO Photographers who want to take ultra-detailed shots of the natural world or other works of art with a tripod
WHAT 100-megapixel equivalent (11,552 x 8,672-pixel) ultra-high resolution photo

Handheld High-Res Mode

Multiple images are automatically shot while shifting the sensor using the B.I.S. mechanism and synthesized into one image.

100MP RAW & JPEG

New engine's high-speed processing allows for smooth JPEG processing on the camera itself.

Drive Mode Dial

Easy access from drive mode dial.



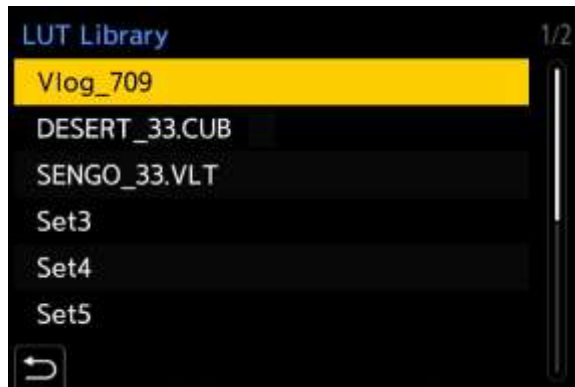
REAL TIME LUT

- WHO** Photographers who want to fully depict the scene they see right in front of them, right now, not process it later
- WHAT** LUT-applied photos and videos can be recorded. Unleashes limitless breadth of expression with just your camera alone.

Photo LUT application and recording on the camera itself

Streamline your workflow with color grading just the way you want it, eliminating the need for post-processing

There are cinema cameras that allow videos to be recorded with LUT applied, but they are for professional use and are not necessarily in high demand. However, LUMIX are expected to be in constant demand among light users such as YouTubers, professionals who want to streamline their work, and the bridal industry, which handles a high volume of images.



Save LUT files to an SD card and register them in the **LUT Library**. (Max. 10 files.)



Apply LUT to V-Log using Photo Style "**REAL TIME LUT**."



"**MY PHOTO STYLE**" allows you to combine Photo Style and LUT, and name them.



LUT can also be applied in **RAW Processing**.

Live View Composite

- WHO** Still image creators who express light in dark environments, such as photographers working with starry skies
- WHAT** Only the brightened areas are composed, enabling the rendering of light trails of stars and fireworks

City lights make time exposures look almost like daytime skies.



Live View Composite shooting compose only the brightened parts, to clearly track the stars against the pitch-black night sky.



Black out



Each time the shutter is operated, a composite image is displayed.





Dependable Autofocus

Improvement of AF

WHAT The camera persistently captures the intended subject even in difficult scenes involving multiple people, quickly and accurately capturing the subject even in backlit or low-light environments.

PDAF

Tracking Ability

Simultaneous output of accuracy-priority MAP and D-range-priority MAP provides both high accuracy and high speed.



PDAF

NEW RECOGNITION AF

Backlit Conditions

By increasing the gain before input to the recognition AI, the camera recognizes the subject even in backlit conditions.



PDAF

NEW RECOGNITION AF

Several People

By monitoring XY (position) and Z (distance), the camera determines the main subject and prevents focus shift.



PDAF

Low Illumination

By optimizing the settings for each ISO sensitivity, it is now possible to measure distances even under -1EV conditions.



PDAF

Product Introduction

An improved algorithm allows the camera to focus on small subjects even when subjects at different distances are mixed together.



PDAF

Light Source

Phase detection AF allows for accurate focusing even in dark areas.

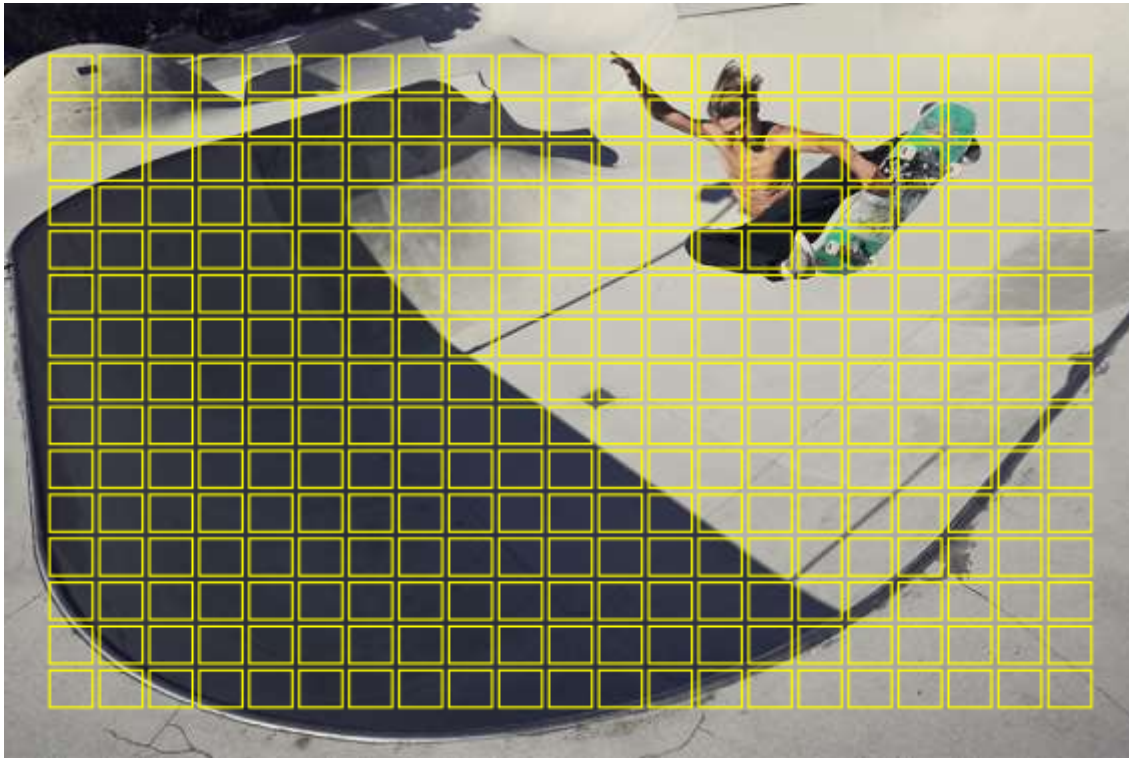


779 AF Point

WHAT

The increased number of focus points allows the camera to continue tracking in detail even small subjects that are prone to losing focus.

Contrast AF : $21 \times 15 = 315$

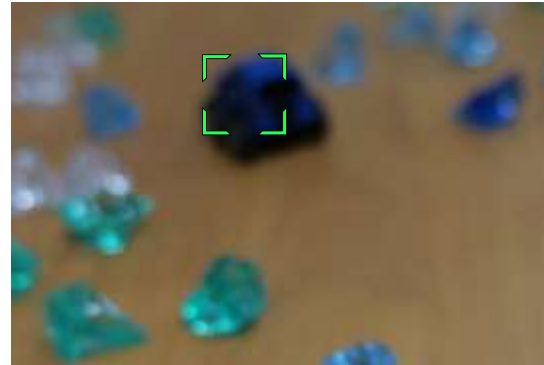
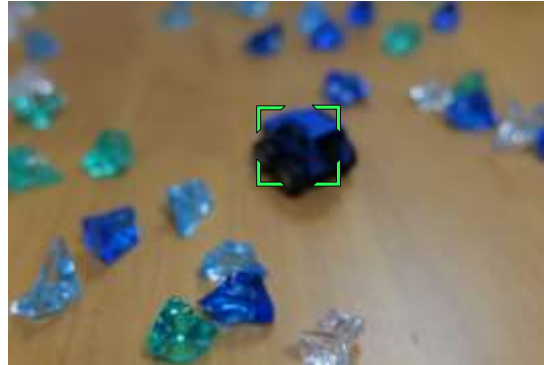


Phase Detection AF : $41 \times 19 = 779$



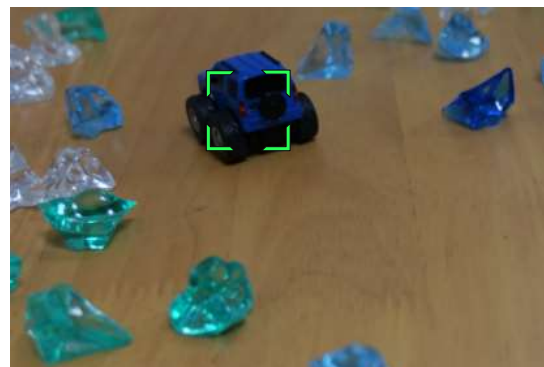
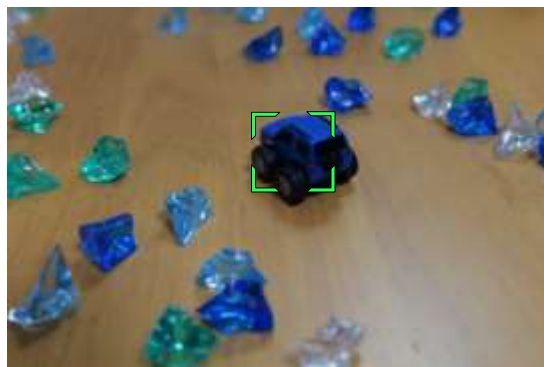
AFC When Zooming

Phase Detection AF allows high-speed distance measurement and improved motion prediction algorithm



Conventional

Goes out of focus when zooming in



LUMIX G9II

The camera stays in focus even when zooming in while taking burst shots using AFC

AF Micro Adjustment

When using Phase Detection AF, the focus position is shifted to improve AF accuracy.

Phase Detection AF may cause a shift in the focus position due to individual differences in cameras and lenses.



AF on Face

Lack of Focus

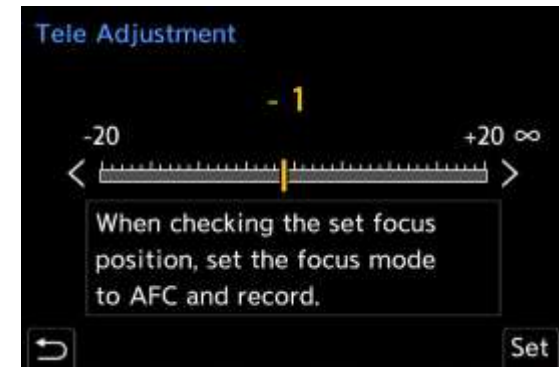
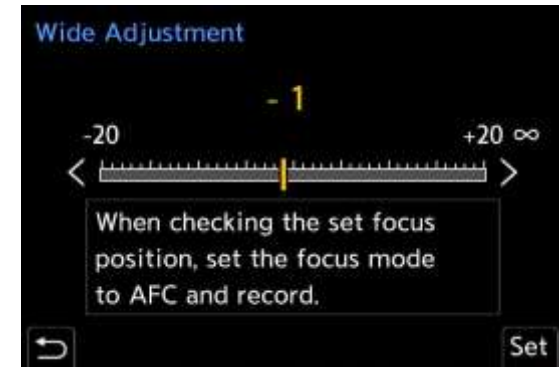


Hand is in focus, indicating a tendency toward **Rear-Focusing**



Focus position can be fine-tuned uniformly or with lens

(Up to 40 lenses can be registered)

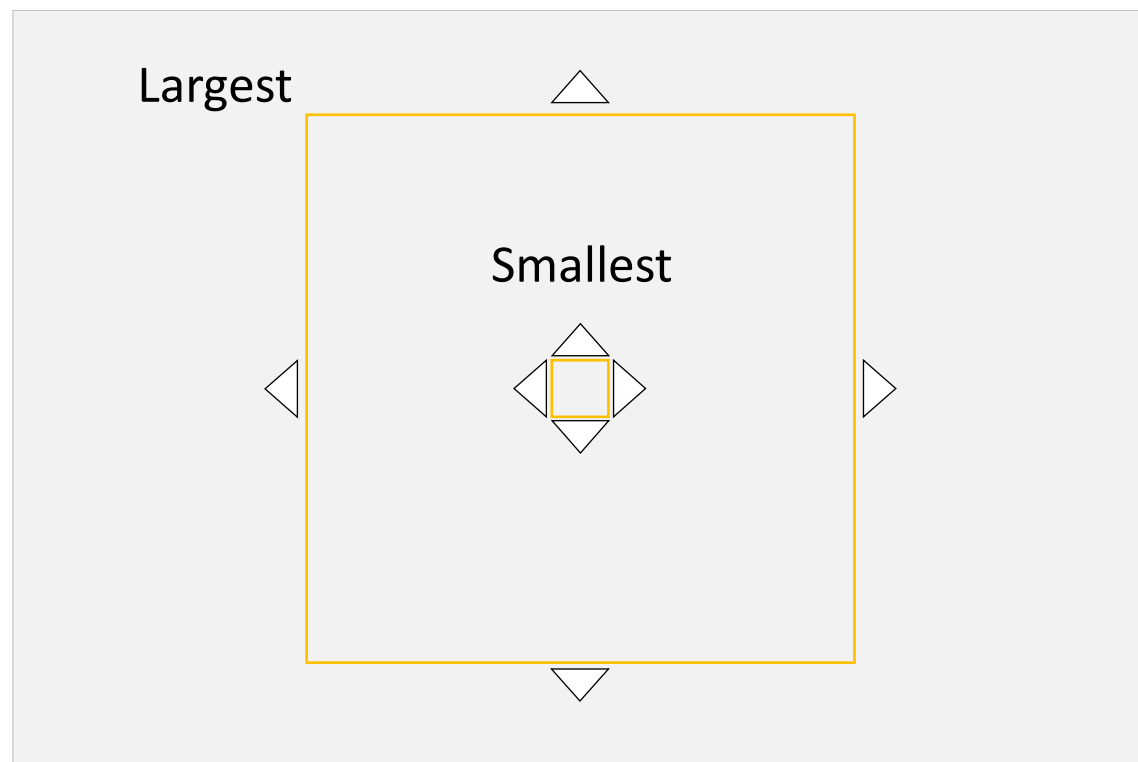


Smaller Frame in 1-Area AF

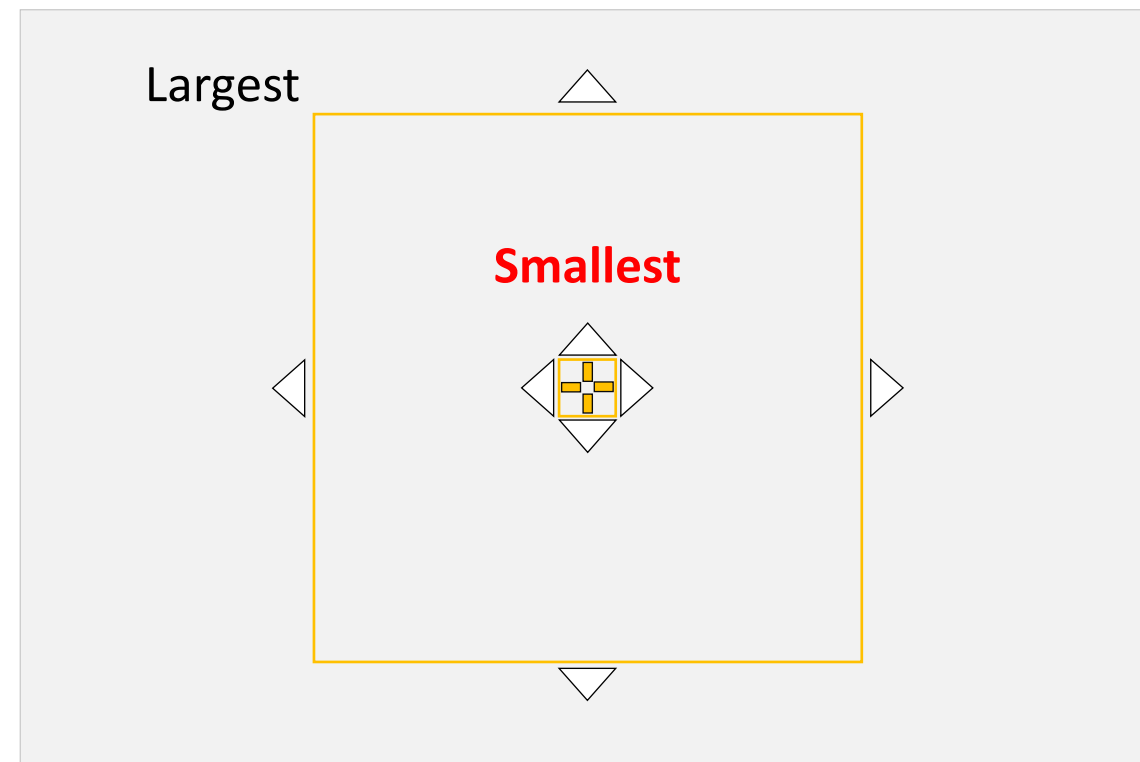
WHO We have responded to requests from professionals who want to set the focus to an even smaller area.

WHAT Operation is simple. The AF frame can be set as small as the pinpoint level.

Conventional

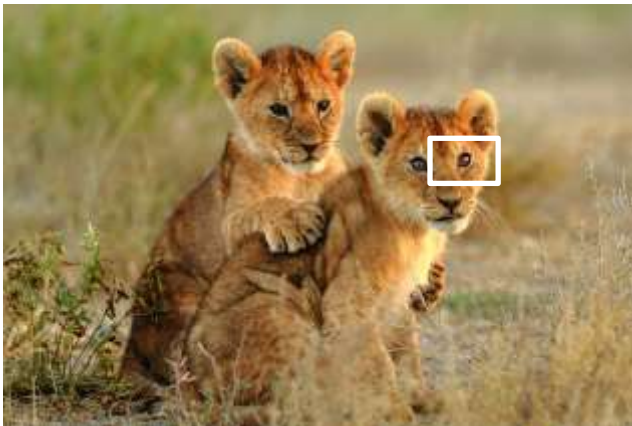


NEW



AF-Point Scope

Enlarges the subject temporarily for confirmation of focusing position.



MF Assist 20x

The 20x enlarged view allows more precise MF. Convenient when shooting starry skies.





Recognition Technology

Evolution of Detection AF

WHAT Expand the range of animal, sports and car/motorcycle photography

New AI-powered Recognition Technology More Accurate Human/Animal Recognition

More accurate human body recognition in scenes with several people without the AF frame moving to other subjects

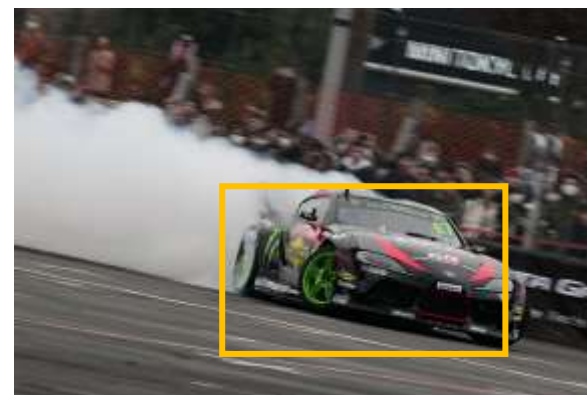
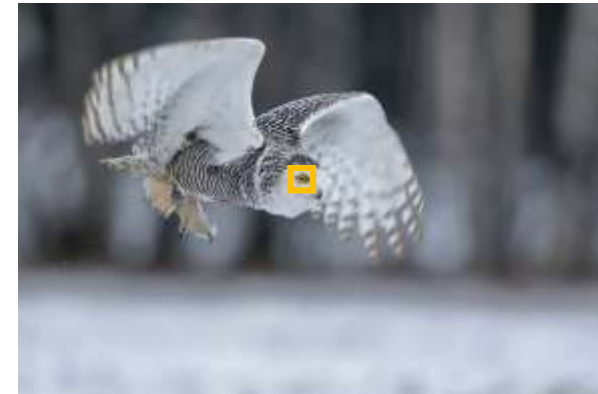


Recognizes humans and animals separately



*Not all subjects can be detected according to the settings.
*Some subjects that are not animals may be detected as animals.

New Recognition Mode Animal Eyes / Cars / Motorcycles



Burst Shooting

Burst Shooting

WHO Photographers who want to use the appropriate shutter mode for each shooting scene

WHAT AFC 60fps / AFS 75fps burst shooting featuring electronic shutter with minimal rolling shutter distortion

		G9	G9II
Mechanical	AFS	12 fps RAW+JPEG : 60 images RAW : 60 images JPEG : 600 images	14 fps RAW+JPEG : 160 images RAW : 170 images JPEG : 200 images
	AFC	9 fps RAW+JPEG : 60 images RAW : 60 images JPEG : 600 images	10 fps RAW+JPEG : 160 images RAW : 170 images JPEG : 200 images
Electronic	AFS	60 fps RAW+JPEG : 50 images RAW : 50 images JPEG : 50 images	75 fps RAW+JPEG : 200 images RAW : 200 images JPEG : 200 images
	AFC	20 fps RAW+JPEG : 50 images RAW : 50 images JPEG : 50 images	60 fps RAW+JPEG : 200 images RAW : 200 images JPEG : 200 images

Enhanced buffer memory enables approximately *three seconds* of continuous burst shooting

Even during burst shooting, monitor remains *blackout-free*

Increased output speed of new sensor and outstanding processing performance of new engine *control rolling shutter distortion*

Burst shooting with mechanical shutter possible even when using *a third-party flash*

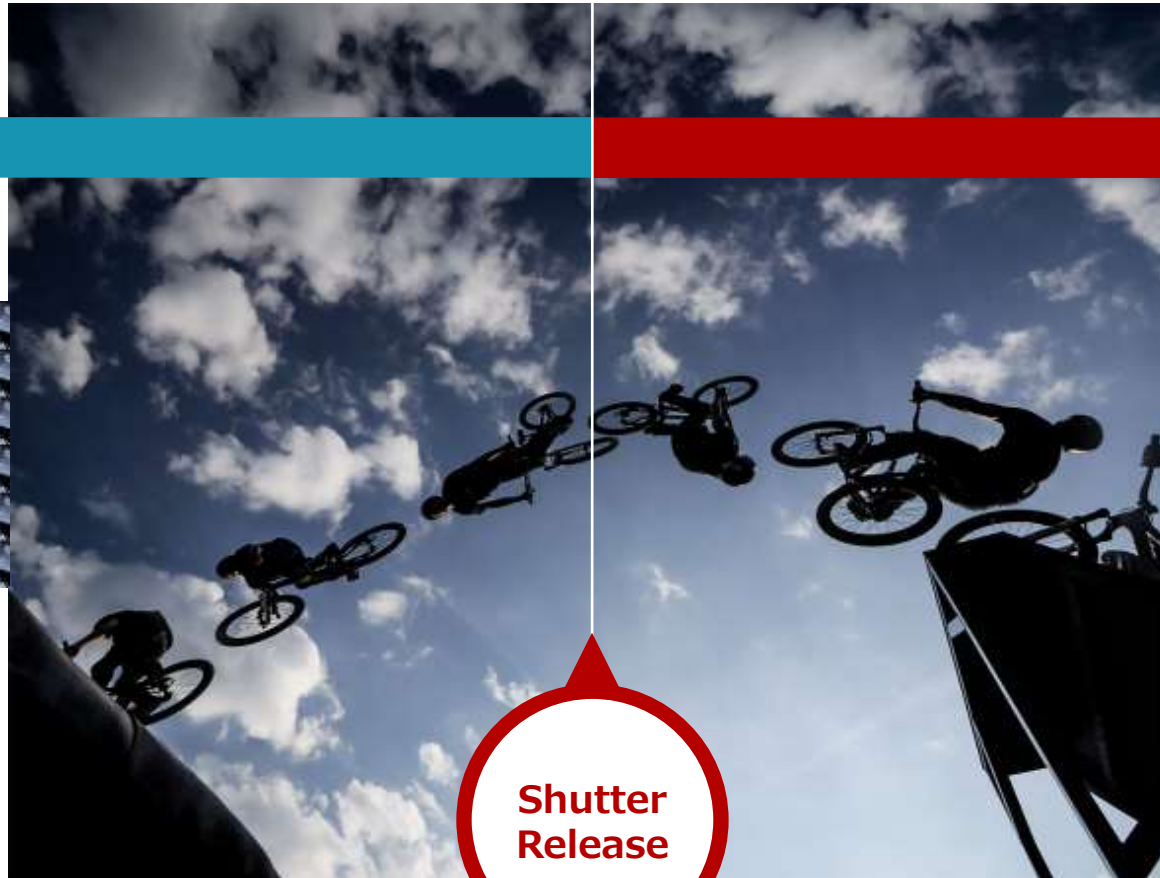
Pre-Burst Shooting

WHO Photographers who shoot birds, insects, sports, and other fast-paced subjects

WHAT Goes back in time so you never fail to capture those perfect photo moments

Burst Shooting

Pre-Burst Shooting



- ✓ Go back in time to get your shot
- ✓ 0.5-, 1-, or 1.5-second settings

* 0.4 sec for LUMIX G9

TABLE OF CONTENTS

1. Product Overview
2. Picture-Making
 - New Photo Style
 - High Image Quality
3. High Speed Response
 - Dependable Autofocus
 - Recognition Technology
 - Burst Shooting
4. Image Stabilization
5. Video Creation
6. Outstanding Mobility
 - Intuitive Operation
 - Durability & Reliability
7. Spec Comparison

IMAGE STABILIZATION

WHY

LUMIX believes that its mission is to encourage videographers to be more proactive so that they do not need to give up on what they want to capture on account of the limits of camera technology.

HOW

LUMIX has been a leader in image stabilization for digital cameras for 20 years, since the DMC-FZ1 in 2002.

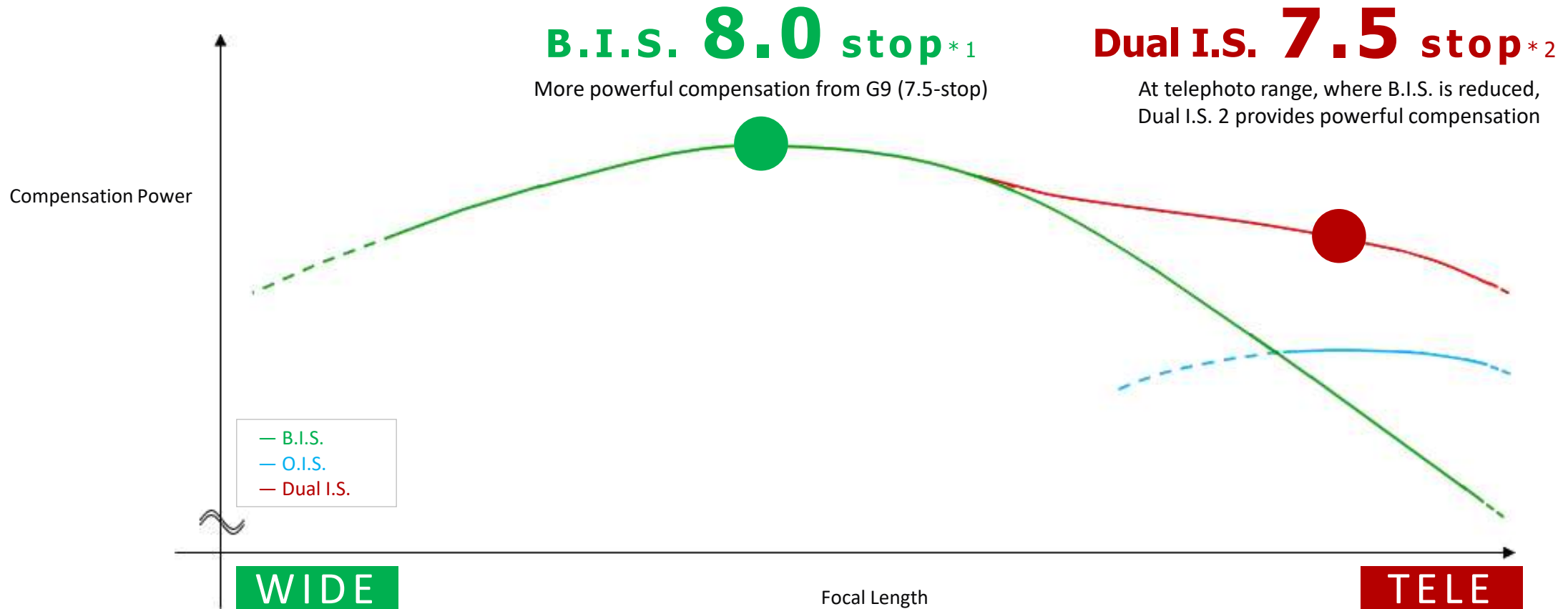
WHAT

*Enables your boundless creativity with **8.0-stop B.I.S.** and **7.5-stop 5-axis Dual I.S. 2** to provide powerful handshake correction even in dark areas and when shooting at a distance.*

Image Stabilization

WHO Photographers who want to keep equipment to a minimum, stay mobile, and get their shots with ease

WHAT 8.0-stop B.I.S. and 7.5-stop 5-axis Dual I.S. provide powerful handshake correction in low light or at telephoto range



*1 Based on the CIPA standard [Yaw/Pitch direction: focusing distance f=60mm (35mm camera equivalent f=120mm) when H-ES12060 is used.]

*2 Based on the CIPA standard [Yaw/Pitch direction: focusing distance f=140mm (35mm camera equivalent f=280mm) when H-FSA14140 is used.]

Active I.S. + Advanced E.I.S.

WHO YouTubers and vloggers who want to take videos while on the move

WHAT Corrects for even greater shake and scenery distortion, enabling you to take smooth videos even while walking and running.



ACTIVE I.S. TECHNOLOGY

B.I.S. & Dual I.S. 2

Boost I.S.

Active I.S. **NEW**

E.I.S. **IMPROVED**

Corrects for shake
when shooting on the move

Corrects even **LARGER SHAKE**
such as running situations

Corrects **PERSPECTIVE DISTORTION**
that occurs during video shooting

: Phenomenon in which straight lines appear distorted,
caused by perspective.

TABLE OF CONTENTS

1. Product Overview
2. Picture-Making
 - New Photo Style
 - High Image Quality
3. High Speed Response
 - Dependable Autofocus
 - Recognition Technology
 - Burst Shooting
4. Image Stabilization
5. Video Creation
6. Outstanding Mobility
 - Intuitive Operation
 - Durability & Reliability
7. Spec Comparison

VIDEO CREATION

W H Y LUMIX' aim is to eliminate borders to photo and video creativity.

H O W With the LUMIX G9II, you can start creating videos even more quickly and easily with just the camera itself—no need for special additional equipment or software.

W H A T You can also record dazzling slow-motion videos in C4K/4K 10-bit 120p/100p. Preserve that one beautiful moment as a video.

Video Feature Summary

With the LUMIX G9II, you can start creating videos even more freely and easily

High Basic Performance

The latest in high image quality and expressive range needed for a wide range of video production.

HIGH QUALITY

4:2:2 10-bit C4K/4K 60p/50p

HIGH RESOLUTION

- ✓ 5.8K 4:3 30p/25p 4:2:0 10-bit
- ✓ 5.7K 17:9 60p/50p 4:2:0 10-bit

HIGH QUALITY SOUND

- ✓ 48kHz 24-bit
- ✓ High-Res 96kHz 24-bit with External Mic
- ✓ 4ch Audio with DMW-XLR1

*MOV, ProRes only.

Easy to Create

Creative expressions that can be realized with the camera itself.

EASY TO CREATE VIDEO

- ✓ C4K/4K 10-bit 120p/100p HFR
- ✓ FHD 10-bit 240p/200p HFR
- ✓ 10-bit Slow & Quick Video

ROBUST IMAGE STABILIZATION

- ✓ Active I.S.
- ✓ E.I.S. *Advanced*

SHOOTING ASSIST FUNCTIONS

- ✓ Frame Marker
- ✓ Vertical video shooting

Advanced Functions

High performance that satisfies users who want to create authentic videos.

13+ stops of V-Log/V-Gamut

* When shooting video/slow & quick shooting at a setting of over 61 fps, the dynamic range provides 12+ stops.

- ✓ ALL-Intra Recording
- ✓ ProRes Recording

USB-SSD Recording

G9II Image Circle (Video)

17 : 9

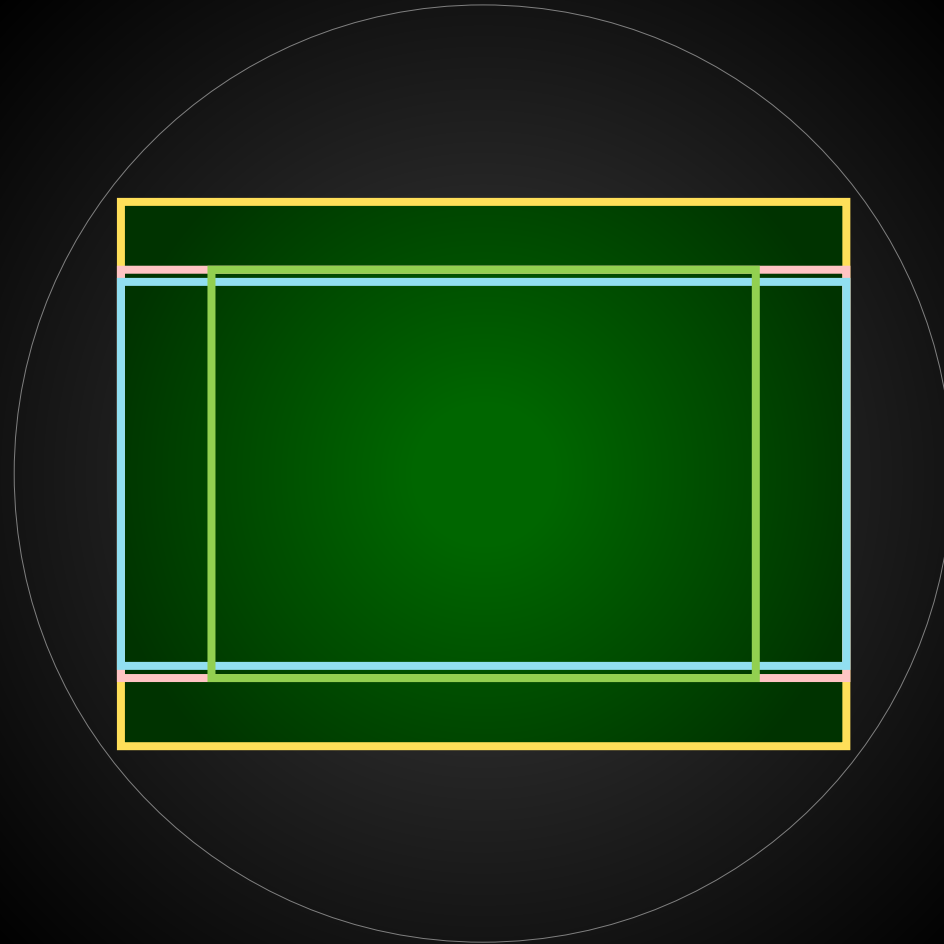
5.7K 60p / 50p 4:2:0 10-bit
5728x3024 30p / 25p / 24p

C4K 60p / 50p / 48p 4:2:2 10-bit
4096x2160 30p / 25p / 24p
120p / 100p 4:2:0 10-bit

16 : 9

4K 60p / 50p 4:2:2 10-bit
3840x2160 30p / 25p / 24p
120p / 100p 4:2:0 10-bit

FHD 240p / 200p 4:2:2 10-bit
1920x1080 60p / 50p / 48p
30p / 25p / 24p



4 : 3 Anamorphic

5.8K 30p / 25p / 24p 4:2:0 10-bit
5760x4320

4 : 3 Anamorphic

4.4K 60p / 50p / 48p 4:2:0 10-bit
4352x3264

Micro Four Thirds Image Circle

LUMIX G9II Video Recording Mode

						59.94Hz	50.00Hz	24.00Hz	Sensor Output	Media / Device	
MOV	[5.8K] 5760x4320 (4:3)	4:2:0 10-bit	LongGOP	H.265/HEVC	200Mbps	29.97p / 23.98p	25.00p	24.00p		SD / USB-SSD	(*1)
	[5.7K] 5728x3024 (17:9)	4:2:0 10-bit	LongGOP	H.265/HEVC	300Mbps	59.94p / 47.95p	50.00p	48.00p		SD / USB-SSD	(*1)
		4:2:0 10-bit	LongGOP	H.265/HEVC	200Mbps	29.97p / 23.98p	25.00p	24.00p		SD / USB-SSD	(*1)
	[4.4K] 4352x3264 (4:3)	4:2:0 10-bit	LongGOP	H.265/HEVC	300Mbps	59.94p / 47.95p	50.00p	48.00p		SD / USB-SSD	(*2)
	[C4K] 4096x2160 [4K] 3840x2160	4:2:0 10-bit	LongGOP	H.265/HEVC	300Mbps	119.88p	100.00p	120.00p		SD / USB-SSD	(*3)
		4:2:2 10-bit	ALL-Intra	H.264	800Mbps	59.94p / 47.95p	50.00p	-		USB-SSD	
		4:2:2 10-bit	ALL-Intra	H.264	600Mbps	59.94p / 47.95p	50.00p	-		SD / USB-SSD	
		4:2:2 10-bit	LongGOP	H.264	200Mbps	59.94p / 47.95p	50.00p	-		SD / USB-SSD	
		4:2:0 10-bit	LongGOP	H.265/HEVC	200Mbps	59.94p / 47.95p	50.00p	-		SD / USB-SSD	
		4:2:2 10-bit	ALL-Intra	H.264	400Mbps	29.97p / 23.98p	25.00p	24.00p		SD / USB-SSD	
		4:2:2 10-bit	LongGOP	H.264	150Mbps	29.97p / 23.98p	25.00p	24.00p		SD / USB-SSD	
	[FHD] 1920x1080	4:2:0 10-bit	LongGOP	H.265/HEVC	150Mbps	29.97p / 23.98p	25.00p	24.00p		SD / USB-SSD	
		4:2:2 10-bit	ALL-Intra	H.264	800Mbps	239.76p	200.00p	-		USB-SSD	(*1) (*3)
		4:2:2 10-bit	LongGOP	H.264	200Mbps	239.76p	200.00p	-		SD / USB-SSD	(*1) (*3)
		4:2:0 10-bit	LongGOP	H.265/HEVC	200Mbps	239.76p	200.00p	-		SD / USB-SSD	(*1) (*3)
		4:2:2 10-bit	ALL-Intra	H.264	400Mbps	119.88p	100.00p	120.00p		SD / USB-SSD	(*3)
		4:2:2 10-bit	LongGOP	H.264	150Mbps	119.88p	100.00p	120.00p		SD / USB-SSD	(*3)
		4:2:0 10-bit	LongGOP	H.265/HEVC	150Mbps	119.88p	100.00p	120.00p		SD / USB-SSD	(*3)
4:2:2 10-bit		ALL-Intra	H.264	200Mbps	59.94p / 47.95p / 29.97p / 23.98p	50.00p / 25.00p	24.00p		SD / USB-SSD		
S&Q	[C4K] 4096x2160 [4K] 3840x2160	4:2:0 10-bit	LongGOP	H.265/HEVC	200Mbps	59.94p	50.00p	-	1 - 120fps	SD / USB-SSD	(*4)
		4:2:2 10-bit	ALL-Intra	H.264	400Mbps	29.97p / 23.98p	25.00p	24.00p	1 - 60fps	USB-SSD	
	[FHD] 1920x1080	4:2:0 10-bit	LongGOP	H.265/HEVC	150Mbps	29.97p / 23.98p	25.00p	24.00p	1 - 120fps	SD / USB-SSD	(*4)
4:2:0 10-bit		LongGOP	H.265/HEVC	100Mbps	59.94p / 29.97p / 23.98p	50.00p / 25.00p	24.00p	1 - 300fps	SD / USB-SSD	(*4) (*5)	
MP4	[4K] 3840x2160	4:2:2 10-bit	ALL-Intra	H.264	200Mbps	59.94p / 29.97p / 23.98p	50.00p / 25.00p	24.00p	1 - 240fps	USB-SSD	(*4) (*5)
		4:2:0 10-bit	LongGOP	H.265/HEVC	100Mbps	59.94p	50.00p	-		SD / USB-SSD	
		4:2:0 10-bit	LongGOP	H.265/HEVC	72Mbps	29.97p / 23.98p	25.00p	-		SD / USB-SSD	
	[FHD] 1920x1080	4:2:0 8-bit	LongGOP	H.264	100Mbps	29.97p / 23.98p	25.00p	-		SD / USB-SSD	
		4:2:0 8-bit	LongGOP	H.264	28Mbps	59.94p	50.00p	-		SD / USB-SSD	
		4:2:0 8-bit	LongGOP	H.264	20Mbps	29.97p	25.00p	-		SD / USB-SSD	
		4:2:0 8-bit	LongGOP	H.264	24Mbps	23.98p	-	-		SD / USB-SSD	

		59.94Hz	50.00Hz	24.00Hz	
ProRes 422 HQ	[5.7K] 5728x3024 (17:9)	29.97p, 1.9Gbps / 23.98p, 1.5Gbps	25.00p, 1.6Gbps	24.00p, 1.5Gbps	USB-SSD
	[C4K] 4096x2160	59.94p, 1944Mbps / 29.97p, 972Mbps / 23.98p, 778Mbps	50.00p, 1.6Gbps / 25.00p, 811Mbps	24.00p, 779Mbps	USB-SSD
	[FHD] 1920x1080	59.94p, 454Mbps / 29.97p, 227Mbps / 23.98p, 181Mbps	50.00p, 378Mbps / 25.00p, 189Mbps	24.00p, 182Mbps	SD / USB-SSD
ProRes 422	[5.7K] 5728x3024 (17:9)	29.97p, 1.3Gbps / 23.98p, 1.0Gbps	25.00p, 1.1Gbps	24.00p, 1.0Gbps	USB-SSD
	[C4K] 4096x2160	59.94p, 1296Mbps / 29.97p, 648Mbps / 23.98p, 519Mbps	50.00p, 1.1Gbps / 25.00p, 541Mbps	24.00p, 519Mbps	USB-SSD
	[FHD] 1920x1080	59.94p, 302Mbps / 29.97p, 151Mbps / 23.98p, 121Mbps	50.00p, 252Mbps / 25.00p, 126Mbps	24.00p, 121Mbps	SD / USB-SSD

*1 Image Area of Video is set to FULL during this recording mode. *2 Image Area of Video is set to PIXEL/PIXEL during this recording mode. *3 An AC Adaptor DMW-AC10 (optional) and DC Coupler DMW-DCC17 (optional) are required on a USB-SSD.

*4 An AC Adaptor DMW-AC10 (optional) and DC Coupler DMW-DCC17 (optional) are required to record video of 61fps or higher on a USB-SSD. *5 Maximum output of sensor is 120fps when Image Area of Video is set to PIXEL/PIXEL.

A Higher Grade of Visual Expression

USB-SSD Recording

With the LUMIX G9II, recording and playback is supported using an external SSD via USB. In addition, the ability to record ProRes 422 HQ and 4:2:2 10-bit All-Intra directly to SSDs, which combine portability and high capacity has improved efficiency in data backup and post-processing.



ADVANTAGES OF USB-SSD

- *Better heat resistance than internal recording*
- *More reasonable than memory card*
- *Capable of shooting in high bitrate recording mode*

- Use an external SSD no more than 2 TB in size that is compatible with USB Type-C.
- Be sure to follow the correct procedure when connecting and removing the external SSD. If you do not perform the steps as shown, the external SSD may not be recognized or the external SSD or recording data may be corrupted.

ProRes Codec Video

The professional industry standard, which deliver high image quality at low compression. This significantly reduces the load on the computer during post-production and allows non-linear editing without transcoding, streamlining your workflow from start to finish.

		59.94Hz	50.00Hz	24.00Hz	
ProRes 422 HQ	5.7K 17:9	29.97p, 1.9Gbps 23.98p, 1.5Gbps	25.00p, 1.6Gbps	24.00p, 1.5Gbps	USB-SSD
	C4K 17:9	59.94p, 1944Mbps 29.97p, 972Mbps 23.98p, 778Mbps	50.00p, 1.6Gbps 25.00p, 811Mbps	24.00p, 779Mbps	USB-SSD
	FHD 16:9	59.94p, 454Mbps 29.97p, 227Mbps 23.98p, 181Mbps	50.00p, 378Mbps 25.00p, 189Mbps	24.00p, 182Mbps	SD USB-SSD
ProRes 422	5.7K 17:9	29.97p, 1.3Gbps 23.98p, 1.0Gbps	25.00p, 1.1Gbps	24.00p, 1.0Gbps	USB-SSD
	C4K 17:9	59.94p, 1296Mbps 29.97p, 648Mbps 23.98p, 519Mbps	50.00p, 1.1Gbps 25.00p, 541Mbps	24.00p, 519Mbps	USB-SSD
	FHD 16:9	59.94p, 302Mbps 29.97p, 151Mbps 23.98p, 121Mbps	50.00p, 252Mbps 25.00p, 126Mbps	24.00p, 121Mbps	SD USB-SSD

Slow & Quick Motion

		60 x	QUICK										1 x	SLOW										12.5 x							
			50 x	30 x	15 x	10 x	6 x	5 x	4 x	2 x	1 x	2 x		3 x	4 x	5 x	6 x	8 x	10 x	12 x											
C4K 4K	4:2:2 10-bit ALL-Intra*2	-	-	1	-	2	-	-	5	-	-	-	10	15	-	30p	-	60	-	-	-	-	-	-	-	-	-	-	-	-	-
		-	-	-	1	-	2	-	-	5	-	-	10	-	15	25p	30	-	60	-	-	-	-	-	-	-	-	-	-	-	-
		-	-	-	1	-	2	-	-	-	5	-	-	10	-	15	24p	30	-	60	-	-	-	-	-	-	-	-	-	-	-
	4:2:0 10-bit LongGOP	1	-	2	-	-	5	-	10	-	-	15	-	30	-	60p	100	120	-	-	-	-	-	-	-	-	-	-	-	-	-
		-	1	-	2	-	-	5	-	10	-	-	15	-	30	50p	60	100	120	-	-	-	-	-	-	-	-	-	-	-	-
		-	-	1	-	2	-	-	5	-	-	-	10	15	-	30p	-	60	-	-	100	120	-	-	-	-	-	-	-	-	-
-		-	-	1	-	2	-	-	5	-	-	10	-	15	25p	30	-	60	-	-	100	120	-	-	-	-	-	-	-	-	
-	-	-	1	-	2	-	-	-	5	-	-	10	-	15	24p	30	-	60	-	-	-	100	120	-	-	-	-	-	-	-	
FHD*1	4:2:2 10-bit ALL-Intra*2	1	-	2	-	-	5	-	10	-	-	15	-	30	-	60p	100	120	150	180	200	240	-	-	-	-	-	-	-	-	-
		-	1	-	2	-	-	5	-	10	-	-	15	-	30	50p	60	100	120	150	180	200	240	-	-	-	-	-	-	-	-
		-	-	1	-	2	-	-	5	-	-	-	10	15	-	30p	-	60	-	-	100	120	-	150	180	200	-	240	-	-	-
		-	-	-	1	-	2	-	-	5	-	-	10	-	15	25p	30	-	60	-	-	100	120	-	150	-	180	200	240	-	-
		-	-	-	1	-	2	-	-	-	5	-	-	10	-	15	24p	30	-	60	-	-	-	100	120	-	150	180	-	200	240
	4:2:0 10-bit LongGOP	1	-	2	-	-	5	-	10	-	-	15	-	30	-	60p	100	120	150	180	200	240	-	300	-	-	-	-	-	-	-
		-	1	-	2	-	-	5	-	10	-	-	15	-	30	50p	60	100	120	150	180	200	240	-	300	-	-	-	-	-	-
		-	-	1	-	2	-	-	5	-	-	-	10	15	-	30p	-	60	-	-	100	120	-	150	180	200	-	240	-	300	-
		-	-	-	1	-	2	-	-	5	-	-	10	-	15	25p	30	-	60	-	-	100	120	-	150	-	180	200	240	-	300
		-	-	-	1	-	2	-	-	-	5	-	-	10	-	15	24p	30	-	60	-	-	-	100	120	-	150	180	-	200	240

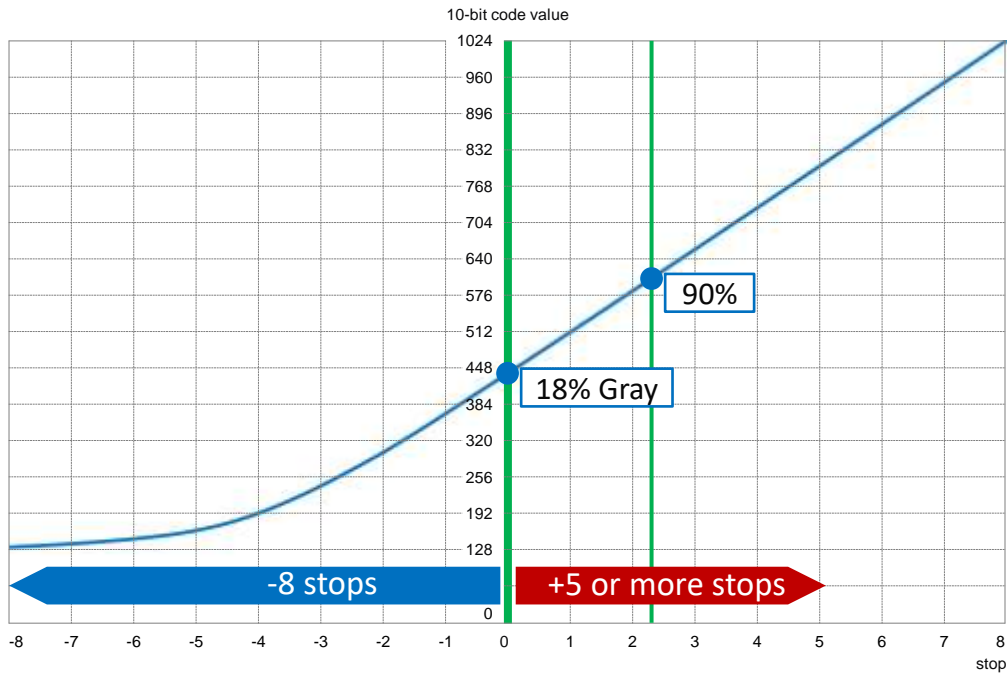
An AC Adaptor DMW-AC10 (optional) and DC Coupler DMW-DCC17 (optional) are required to record video of 61fps or higher on a USB-SSD.

*1 Maximum output of sensor is 120fps when Image Area of Video is set to PIXEL/PIXEL. *2 External USB-SSD recording.

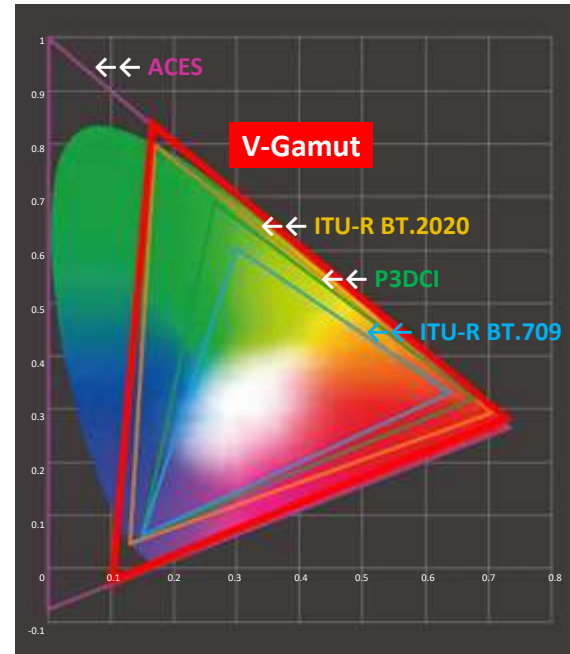
13+ stops of V-Log / V-Gamut

*When shooting video/slow & quick shooting at a setting of over 61 fps, the dynamic range provides 12+ stops.

WHAT Precise control of color data in post-production, and seamless editing with footage shot with VariCam cameras



Input Reflection [%]	V-Log			
	IRE [%]	Stop	10-bit Code Value	12-bit Code Value
0	7.3	-	128	512
18	42	0.0	433	1732
90	61	2.3	602	2408



V-Gamut (Color Gamut)

The color gamut is wide.
Footage from VariCam series cameras can be seamlessly included in the edit.

LUT Assist Functions

LUT View Assist :
The LUT in use is displayed on the monitor or external monitor.

REAL TIME LUT :
LUT-applied photos and videos can be recorded on the camera itself.

.CUBE Compatibility

WHO Videographers who want to produce video using a familiar workflow

WHAT Providing two alternatives for color grading, the LUMIX G9II meets a wider range of creative needs

VariCam LUT Library*

35 conversion LUTs for VariCam cinema cameras and EVA1 can be downloaded free of charge for use in the LUMIX G9II.

https://pro-av.panasonic.net/en/cinema_camera_varicam_eva/support/lut/index.html

LUT Format	Purpose
.VLT	For loading into LUMIX and VariCam cameras.
E-E.CUBE	For post color grading.
E-L.CUBE	For monitoring "LUT box" devices.

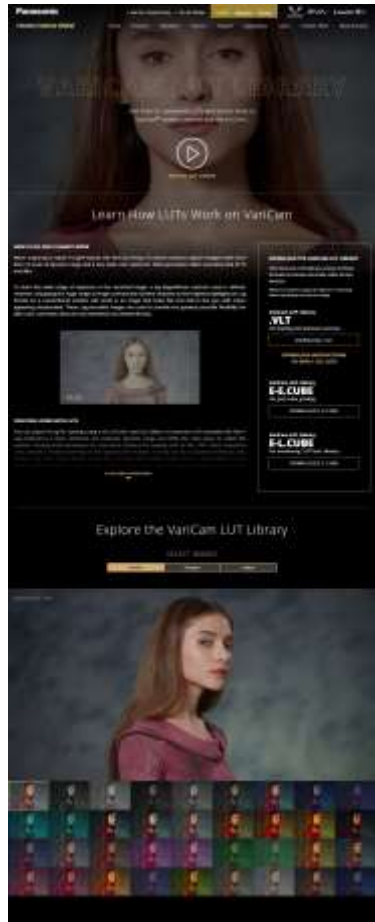
V-709 Conversion 3D-LUT (Pre-installed)

This LUT gives a V-709 finish to images recorded in V-Log. With V-709, a cinematic VariCam Look can be brought to the monitor for on-site previewing. Even without color-grading processing on post-production, V-709 remains the best choice to create expressive images, especially for projects such as live events.

LUT Format	Purpose
.VLT	Compatible with LUMIX and VariCam cameras
.CUBE	Compatible with Final Cut Pro X, Premiere Pro, EDIUS, DaVinci Resolve, etc.
.TXT	Compatible with Quantel Pablo

Support for Longer File Names

- FAT32 (SD card/SDHC card): Up to 8 characters (excluding extension).
- exFAT (SDXC card): Up to 255 characters (including extension).



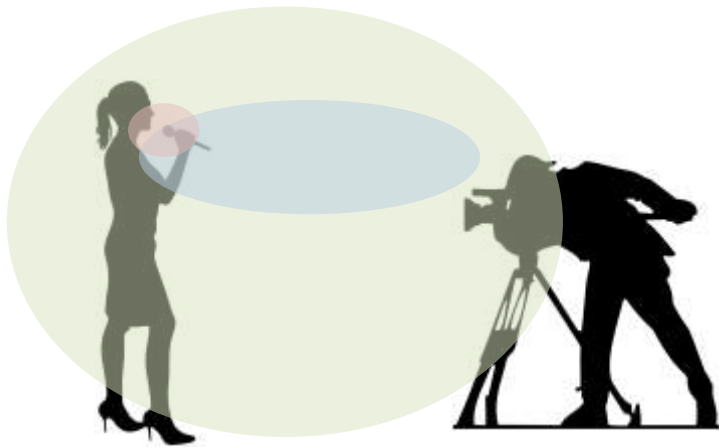
4ch Audio Recording

WHO Professional videographers

WHAT 4ch 48kHz or 96kHz 24-bit recording with an XLR microphone adaptor DMW-XLR1 (sold separately)

Use Case 1: Narration

Shoot a person's voice with a handheld mic and create a backup recording with the shotgun mic. Record ambient sounds with the ambient mic.



1	Shotgun mic	XLR Input 1
2	Handheld mic	XLR Input 2
3	Ambient mic	Built-in / External mic
4	Ambient mic	Built-in / External mic

Use Case 2: Interview

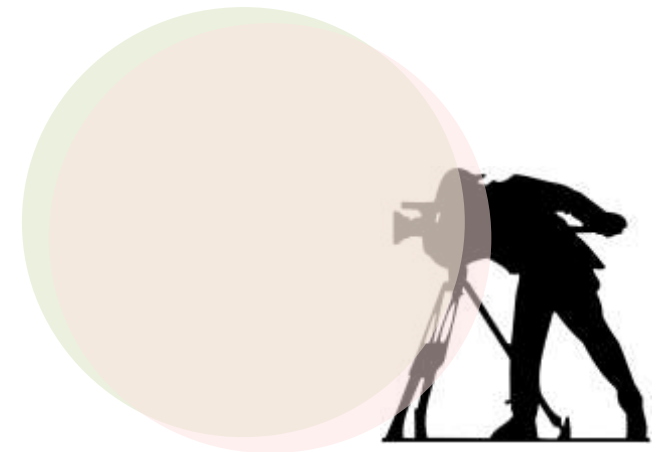
Shoot the voices of multiple people sharply and clearly with the lavalier microphones, and mix environmental sounds naturally and unobtrusively.



1	Lavalier mic (wireless)	XLR Input 1
2	Lavalier mic (wireless)	XLR Input 2
3	Ambient mic	Built-in / External mic
4	Ambient mic	Built-in / External mic

Use Case 3: Backup

Record sounds with the same usage with different microphones and prepare for abnormal noises such as touch noises and recording mistakes.



1	Ambient mic	XLR Input 1
2	Ambient mic	XLR Input 2
3	Ambient mic	Built-in / External mic
4	Ambient mic	Built-in / External mic

*MOV, ProRes only. When attaching DMW-XLR1 (sold separately).

XLR Microphone Adaptor for High-Res 4ch Audio

- Input: Analog, XLR Jack x 2 terminals
- Output: Digital,
Fs = 48k or 96kHz, Bit depth = 16 or 24-bit

Shoe Mount for mounting microphone holder or LED light, etc.

XLR Jack (2 Terminals)



Physical switches / dials for easy setup and checking



Cable Clamp

Shoe Connector

Openable Cover

The setup status of the control panel can be checked through this clear cover.



- 4ch audio recording in 48kHz/96kHz 24-bit. (switch between 2ch and 4ch in the camera menu)
- DC power is supplied by the camera body via a shoe connector.

- High-res sound recording in 96kHz/24bit.
- Good for lip-sync recording.

Video Shooting Assist Functions

Frame Indicator

A red border surrounds the frame as you record, helping you avoid mistakes such as forgetting to press the record button. (ON/OFF selectable)



Red REC Frame Indicator

Frame Marker

From anamorphic videos to vertical videos for social media. Shoot while imagining the angle of view when cropping in post-production.



Frame Aspect

2.39 : 1	CinemaScope
2.35 : 1	
2.00 : 1	Scope
1.85 : 1	VistaVision for USA
16 : 9	High definition
4 : 3	35mm silent film
5 : 4	Social Media
1 : 1	
4 : 5	
9 : 16	Variable & Scalable
Custom	

Frame Color



Frame Mask

100%
75%
50%
25%
OFF

AWB Lock

Lock in auto white balance to optimize efficiency in situations where the light source is variable indoors due to a mixture of artificial and natural light, or in other situations where manual settings based on color temperature would have been required.



Video Shooting Assist Functions

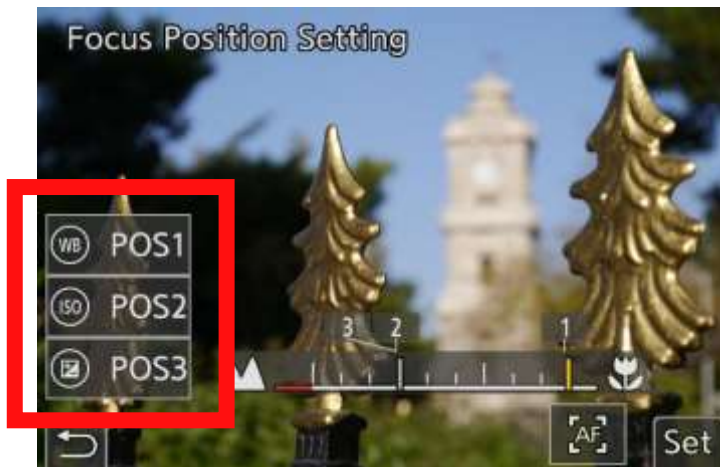
Vertical Position Information

The camera detects the vertical orientation of video.
Users can select whether to add or not add the vertical position information of video from the menu.



Focus Transition

The Focus Transition function automatically shifts the focus point at a constant speed for precise in-focus to out-focus points to give you an impressive 'rack focus' motion picture effect.



Easier setting with button operation

Intuitive Operation

Improved Operation

- JOYSTICK : Smooth 8-directional operation. Larger size makes it easy to use even over long periods of time.
- EYESENSOR : Eye sensor moved to the top of the viewfinder to prevent the sensor from responding accidentally.



DMW-BG1 (Optional)

- Extended battery life when using 2 batteries (One in the camera and another in the battery grip)
- Comfortable grip and easy handling even in vertical shooting.

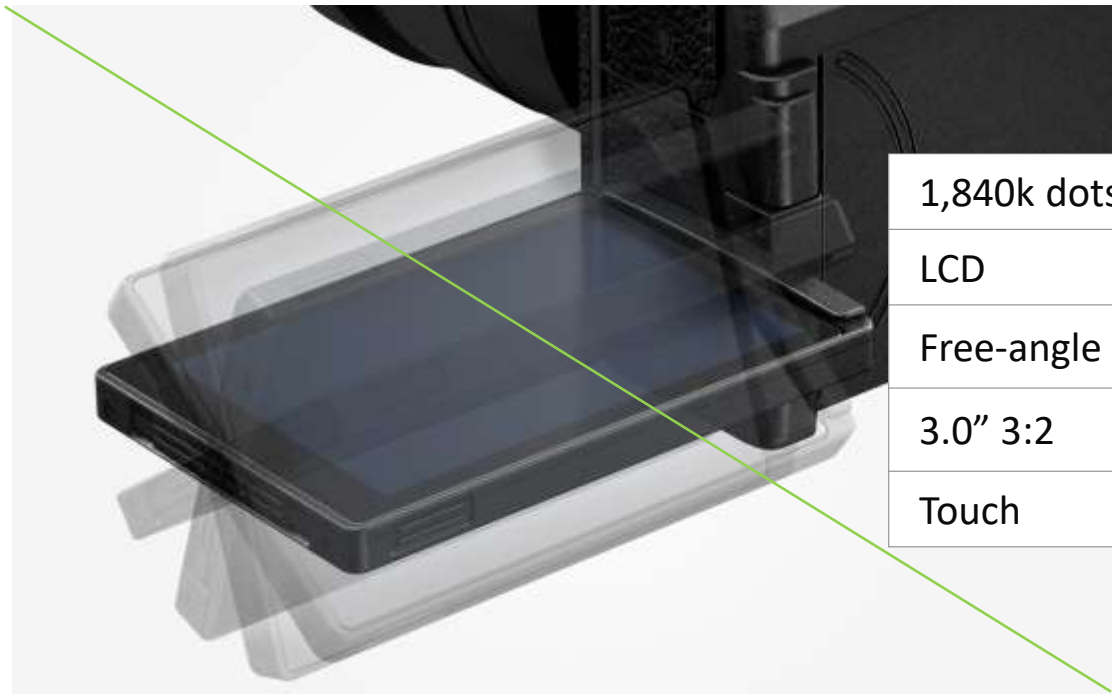


Buttons and Joystick with 8 directions can be used in the same way as the G9II



Free-angle Monitor

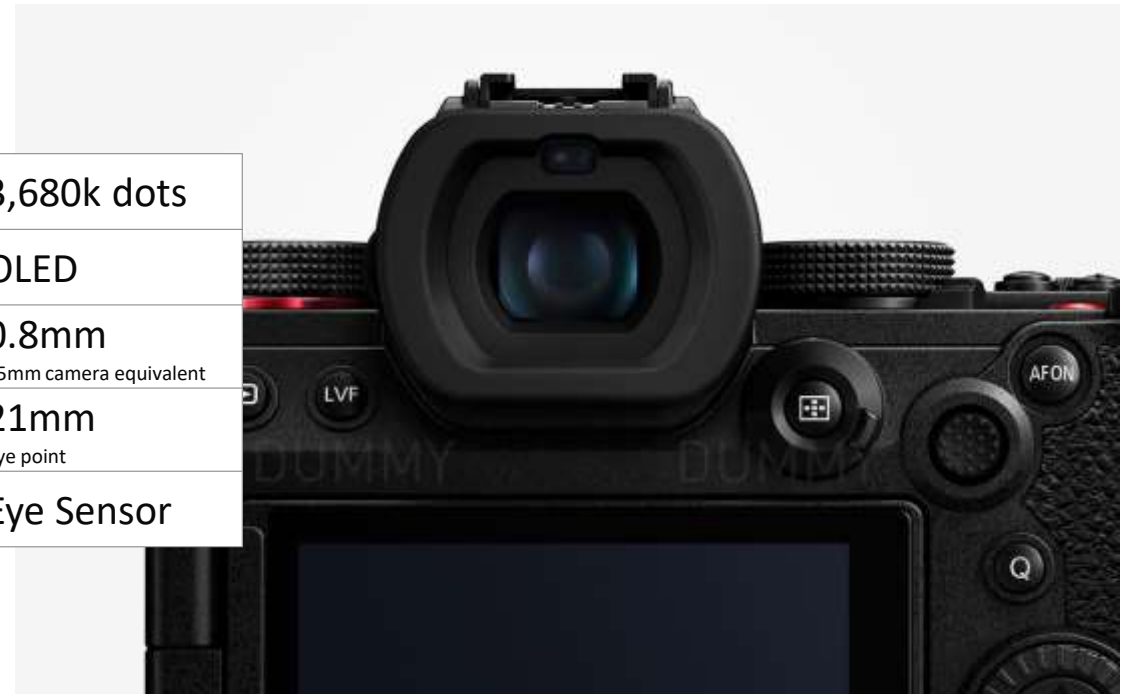
Flexible Framing & High Visibility & Vivid Color



1,840k dots	3,680k dots
LCD	OLED
Free-angle	0.8mm 35mm camera equivalent
3.0" 3:2	21mm Eye point
Touch	Eye Sensor

OLED Live View Finder

High-speed Response & Excellent Color Reproduction



Wider color space

* Simulated images.



Durability & Reliability

Durability to Shoot Under Tough Conditions

WHO Creators who want to shoot without worrying about weather conditions

WHAT Magnesium alloy body and dust and splash resistant design



Weather Resistant Design

Dust and splash resistant construction was achieved by tightly sealing the sections of the camera body.*

* Dust and Splash Resistant does not guarantee that damage will not occur if this camera is subjected to direct contact with dust and water.

Lightweight, Durable Body

A magnesium alloy full diecast armor frame makes the body lightweight yet durable while bringing ruggedness to the compact size.

USB 3.2 Gen2 Type-C



USB Power Supply

Compatible with USB 3.2 Gen2 Type-C, allowing you to shoot while charging at high speed, convenient during long shoots in the studio or elsewhere.

USB PD Compatible

The battery can be charged while supplying power to the camera* when used in combination with USB Power Delivery standard compliant battery charger model DMW-BTC15 (sold separately).

*USB PD compatible devices with 9V/3A output (more than 27W) can be used. Panasonic does not guarantee the operation of all USB PD compatible devices.

HDMI Type A

A highly versatile and durable HDMI Type A terminal is provided.



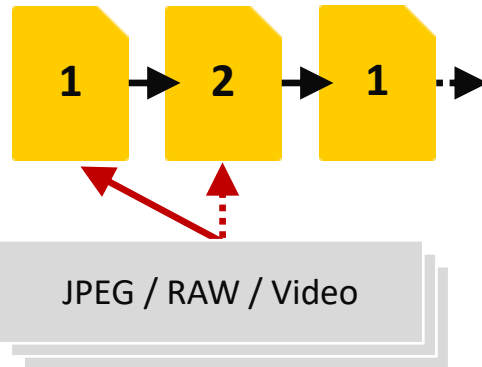
Double SD Slot & UHS-II / V90 Compatibility



Larger Capacity

Relay Rec

The recording media switches automatically and seamlessly.

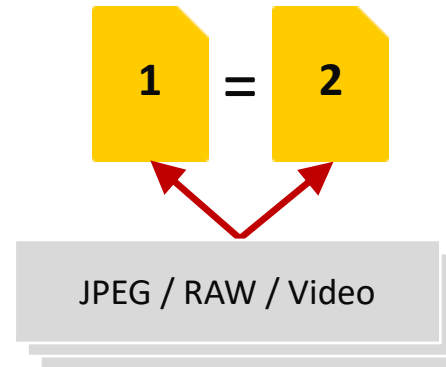


Support **HOT SWAP** in video recording.

Backup

Backup Rec

Identical data is recorded onto cards in both slots.

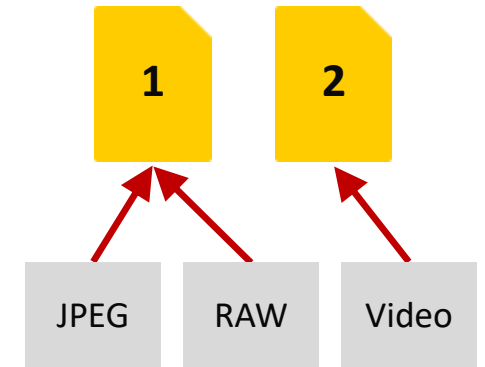


Folder & file number being the same.

Efficient File Arrangement

Allocation Rec

You can select "slot 1" or "slot 2" to record each data.



Folder and file number being the same in RAW and JPEG.

Wi-Fi 5GHz & Bluetooth® v5.0 & LUMIX Sync App

(IEEE802.11ac)

Image Transfer

Transmit photos and videos from your camera to a smartphone. Meets on-site needs where the necessity to report breaking news is required with simple and speedy operation.



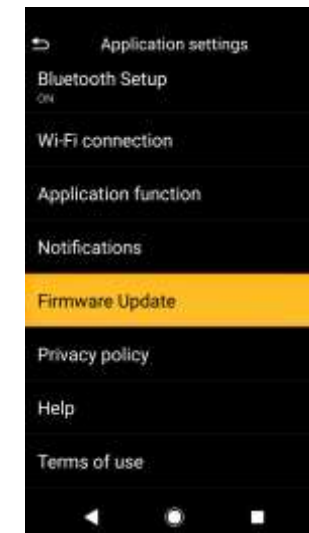
Remote Control

The same UI as that of the LUMIX G9II. It's also possible to copy settings from one camera to another using the LUMIX Sync app (limited to the same model), making multiple-camera control simpler.



Firmware Update

Update your camera firmware via smartphone. You can update immediately without the hassle of using a computer.



Accessories



Shutter Remote Control
DMW-RS2



Tripod Grip
DMW-SHGR1



XLR Microphone Adaptor
DMW-XLR1



Microphone
DMW-MS2 / VW-VMS10



External Flash
DMW-FL580L/FL360L/FL200L



LED Video Light
VW-LED1

Bundled Accessories

- Battery Pack
- AC Adaptor
- USB Connection Cable (A-C)
- Shoulder Strap
- Body Cap
- Hot Shoe Cover
- Cover for the Battery Grip Connector



- LUMIX G Lenses
- MFTS Lenses



AC Adaptor
DMW-AC10



DC Coupler
DMW-DCC17



Battery Charger
DMW-BTC15



Battery Pack
DMW-BLK22



Battery Grip
DMW-BG1



Shoulder Strap
DMW-SSTG9

Evolution of Specifications 1/2

		LUMIX G9II	LUMIX G9
Release		Autumn 2023	Spring 2018
Price (Body)		N/A	N/A
Image Sensor		25.2MP w/o LPF	20.33MP w/o LPF
Dynamic Range Boost		Yes	-
High Resolution Mode		100MP Handheld	80MP
ISO		100-25600, Ex 50	200-25600, Ex 100
B.I.S. (*1) / Dual I.S. 2 (*2)		8.0-stop / 7.5-stop	6.5-stop / 6.5-stop
AF		Phase Hybrid AF, 779-point	Contrast AF, 225-area
		Human (Body, Face, Eye), Animal (Body, Eye), Car/Motorcycle	Human (Body, Face, Eye), Animal (Cat, Dog, Bird)
Shutter Speed	Mechanical	1/8,000-60, Bulb, X=1/250	1/8,000-60, Bulb, X=1/250
	Electronic	1/32,000-60, Bulb	1/32,000-1
Burst Shooting	Mechanical	AFC 10 fps, AFS 14 fps	AFC 9 fps, AFS 12 fps
	Electronic	AFC 60 fps, AFS 75 fps	AFC 20 fps, AFS 60 fps
	Pre-Burst	0.5 sec / 1.0 sec / 1.5 sec (Selectable)	0.4 sec (Fixed)
Monitor	EVF	3680k 0.8x 21mm OLED LVF	3680k 0.83x 21mm OLED LVF
	LCD	1,840k Free-angle LCD	1,040k Free-angle LCD
Card Slot		Slot 1,2: SD UHS-II	Slot 1,2: SD UHS-II
Remote / Synch Socket		φ2.5mm / -	φ2.5mm / Yes
Weather Resistant (*3)		Splash/Dust/Freeze Resistant	Splash/Dust/Freeze Resistant
USB Charging		USB-PD Power Supply/Charge	USB Power Supply/Charge
HDMI / USB		TypeA / USB 3.2 Type-C	TypeA / USB 3.0 Micro-B
Battery Life (with H-FS12060)		LCD/LVF 390 images, Power Save LVF 1,350 images	LCD 400 images, LVF 380 images, Power Save LVF 920 images
Battery Grip		DMW-BG1 (8-directional Joystick)	DMW-BGG9 (4-directional Joystick)
W x H x D (Approx.)		134.3 x 102.3 x 90.1 mm	136.9 x 97.3 x 91.6 mm
Weight (Body, Battery, Card x 1) (Approx.)		658 g	658 g

*1 Based on the CIPA standard [Yaw/Pitch direction: focusing distance f=60mm (35mm camera equivalent f=120mm) when H-ES12060 is used.] *2 Based on the CIPA standard [Yaw/Pitch direction: focusing distance f=140mm (35mm camera equivalent f=280mm) when H-FSA14140 is used.] *3 Dust and Splash Resistant does not guarantee that damage will not occur if this camera is subjected to direct contact with dust and water.

Evolution of Specifications 2/2

		LUMIX G9II	LUMIX G9	
Latitude		13+ stops (V-Log) (*1), 12+ stops (V-Log) (*2)	V-LogL (*with optional DMW-SFU1)	
Recording File Format		MOV, MP4, ProRes	MOV, MP4, AVCHD	
Audio	2ch	AAC: 48kHz/16-bit, LPCM: 48kHz/24-bit, 96kHz/24-bit (*3)	AAC: 48kHz/16-bit, LPCM: 48kHz/16-bit	
	4ch	LPCM: 48kHz/24-bit (*4), 96kHz/24-bit (*3)	-	
Rec Time Limitation		No Time Limitation (*5)	Limited	
USB-SSD Recording		Yes	-	
5.8K (4:3)	4:2:0 10-bit	29.97p, 25.00p, 24.00p, 23.98p	-	
5.7K (17:9)	4:2:0 10-bit	59.94p, 50.00p, 48.00p, 47.95p, 29.97p, 25.00p, 24.00p, 23.98p	-	
4.4K (4:3)	4:2:0 10-bit	59.94p, 50.00p, 48.00p, 47.95p	-	
C4K 4K	4:2:2 10-bit	59.94p, 50.00p, 47.95p, 29.97p, 25.00p, 24.00p, 23.98p ALL-Intra: 800Mbps (*6), 600Mbps, 400Mbps	29.97p, 25.00p, 23.98p *4K only	
	4:2:0 10-bit	120.00p, 119.88p, 100.00p (*7) 59.94p, 50.00p, 47.95p, 29.97p, 25.00p, 24.00p, 23.98p	29.97p, 25.00p, 23.98p *4K only	
4K	4:2:0 8-bit	29.97p, 25.00p, 23.98p	59.94p, 50.00p, 29.97p, 25.00p, 23.98p	
FHD	4:2:2 10-bit	239.76p, 200.00p, 120.00p, 119.88p, 100.00p (*7) 59.94p, 50.00p, 47.95p, 29.97p, 25.00p, 24.00p, 23.98p ALL-Intra: 800Mbps (*6), 600Mbps, 400Mbps	59.94p, 50.00p, 29.97p, 25.00p	
	4:2:0 10-bit	239.76p, 200.00p, 120.00p, 119.88p, 100.00p (*7) 59.94p, 50.00p, 47.95p, 29.97p, 25.00p, 24.00p, 23.98p	-	
	4:2:0 8-bit	59.94p, 50.00p, 29.97p, 25.00p, 23.98p	59.94p, 50.00p, 29.97p, 25.00p	
ProRes 422 HQ ProRes 422	5.7K (*6)	29.97p, 25.00p, 24.00p, 23.98p	-	
	C4K (*6) / FHD	59.94p, 50.00p, 29.97p, 25.00p, 24.00p, 23.98p	-	
S&Q	C4K 4K	4:2:2 10-bit	29.97p, 25.00p, 24.00p, 23.98p (*6) / ALL-Intra 400Mbps / 1 - 60fps	-
		4:2:0 10-bit	59.94p, 50.00p, 29.97p, 25.00p, 24.00p, 23.98p / 1 - 120fps (*8)	-
	4K	4:2:0 8-bit	-	29.97p, 25.00p, 23.98p / 2-60fps
	FHD	4:2:2 10-bit	59.94p, 50.00p, 29.97p, 25.00p, 24.00p, 23.98p (*6) / ALL-Intra 200Mbps / 1 - 240fps (*8)	-
		4:2:0 10-bit	59.94p, 50.00p, 29.97p, 25.00p, 24.00p, 23.98p / 1 - 300fps (*8)	-
		4:2:0 8-bit	-	59.94p, 50.00p, 29.97p, 25.00p / 2-180fps

*1 Sensor output is 60fps or less. *2 Sensor output is 61fps or higher. *3 When attaching DMW-XLR1 (sold separately). *4 When attaching Φ 3.5mm microphone or DMW-XLR1 (sold separately). *5 The camera may stop the recording to protect itself when the camera temperature rises. The camera may stop recording when used in a temperature that is lower or higher than the recommended operating temperature (-10 to 40 degrees). *6 USB-SSD recording. *7 An AC Adaptor DMW-AC10 (optional) and DC Coupler DMW-DCC17 (optional) are required on a USB-SSD. *8 An AC Adaptor DMW-AC10 (optional) and DC Coupler DMW-DCC17 (optional) are required to record video of 61fps or higher on a USB-SSD.